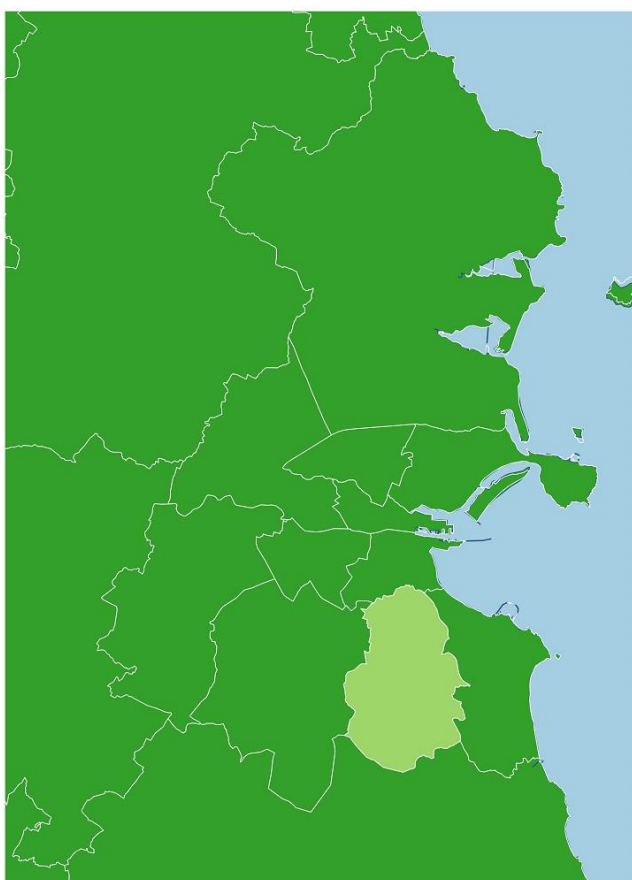


Dáil Éireann Constituency Profile

Dublin Rathdown



January 2020



Contents

Introduction to the Constituency Profile series	1
Introduction to Profile.....	1
Demographics.....	2
Population.....	2
Age cohorts	3
Nationality.....	4
Ethnicity	5
Religion	5
General Health	5
Social class.....	6
Economic Status and Work.....	7
Principal economic status	7
Industry	8
Occupation types	8
Households and Housing.....	9
Accommodation type.....	9
Occupancy type.....	9
PC and broadband.....	10
Central heating.....	11
Vacant dwellings	11
Transport.....	12
Mode to work, school, etc.	12
Journey time to work, school, etc.....	13
Car access.....	13
Education	14
Highest education level completed/achieved	14
Age at which education ceased	15
Families.....	16
Family cycle.....	16
Families with or without children	16
Family type.....	17

For more detail and interactive tables see the L&RS Constituency Dashboards at dashboards.oireachtas.ie:

Constituency Dashboards



Legal Disclaimer

No liability is accepted to any person arising out of any reliance on the contents of this paper. Nothing herein constitutes professional advice of any kind. This document contains a general summary of developments and is not complete or definitive. It has been prepared for distribution to Members to aid them in their parliamentary duties. Some papers, such as Bill Digests are prepared at very short notice. They are produced in the time available between the publication of a Bill and its scheduling for second stage debate. Authors are available to discuss the contents of these papers with Members and their staff but not with members of the general public

Notes

1. The L&RS Constituency Profiles are based on the dataset derived, and adapted, from the CSO's Small Area Population Statistics for Census 2016. The dataset used for the Oireachtas Library & Research Service (L&RS) Constituency Profiles is also used as the basis for the L&RS Constituency Dashboards, available at dashboards.oireachtas.ie. The Constituency Profiles, as well as the sum of the Electoral Divisions (ED) that comprise each constituency, is based on the Schedule of the [Electoral \(Amendment\) \(Dáil Constituencies\) Act 2017](#).
2. Based on the Act's provisions, it should be noted that some constituencies include EDs from neighbouring counties.
3. In some instances - in line with the protocols used for the L&RS Constituency Dashboards - where EDs are split across two constituencies (e.g. EDs bisected by the M50 in Dublin), the data for the full ED is allocated to just one constituency, typically the constituency in which the majority of a specific ED's population and/or geographic area is located.
4. Due to rounding, some totals may not correspond to the sum of the separate figures.

Library and Research Service
Houses of the Oireachtas

For more detail and interactive tables see the L&RS Constituency Dashboards at dashboards.oireachtas.ie:

Constituency Dashboards



Introduction to the Constituency Profile series

The Constituency Profiles are based on the [Small Area Population Statistics \(SAPS\)](#) from the Central Statistics Office (CSO) [Census 2016](#) releases.¹ The Oireachtas Library and Research Service (L&RS) Constituency Profiles series is a complementary publication to, and shares a similar structure of, the online interactive Constituency Dashboards (available at dashboards.oireachtas.ie). Each Constituency Profile reflects the Dáil constituencies as set out in the [Electoral \(Amendment\) \(Dáil Constituencies\) Act 2017](#).

In keeping with the L&RS Constituency Dashboards, each Constituency Profile is structured under the following **6 themes**:



The Themes and Indicators included in this Profile reflect a selection of those used in the interactive Constituency Dashboards. A description of terms used by the CSO in the Census is set out in footnotes where relevant.

Introduction to Profile

Dublin Rathdown is a 3-seat constituency located to the south of Dublin City Centre in the northern part of Dún Laoghaire-Rathdown Council's Administrative area. It includes, among others, the following locations: Dundrum, Ballinteer, Sandyford and Stillorgan. The constituency of Dublin Rathdown comprises of 27 Electoral Divisions (EDs).

¹ The maps in this publication were produced in cooperation with the School of Geography, University College Dublin.

Figure 1: Location of Dublin Rathdown

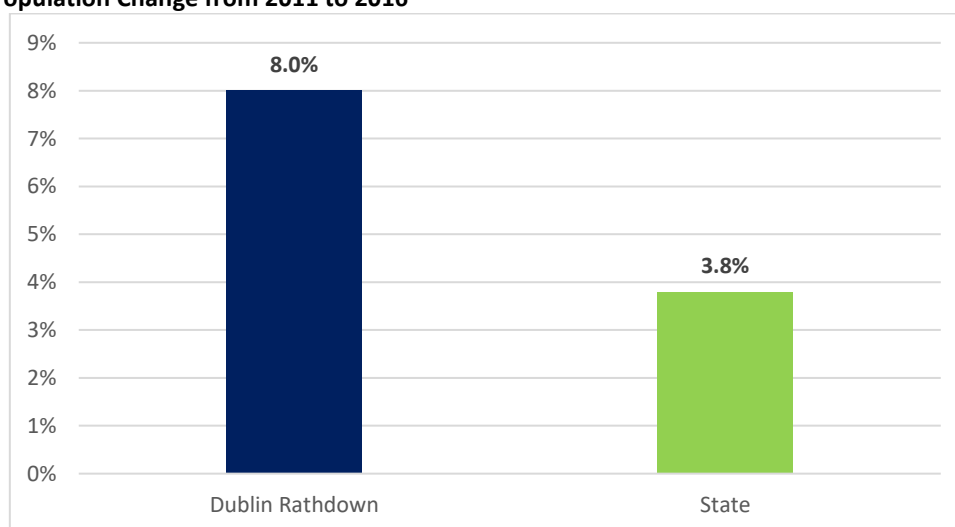


Demographics

Population

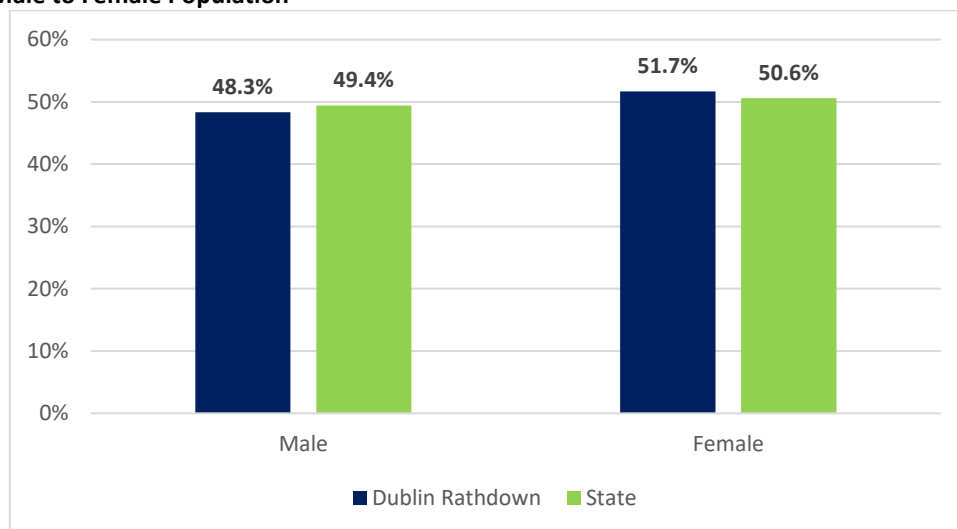
The population of the constituency at the time of the 2016 Census was **94,472**. This represents an 8% increase from 2011. As shown in Figure 2, this rate of increase exceeded the corresponding national rate of change for the same period.

Figure 2: Population Change from 2011 to 2016



In 2016, 51.7% (48,826) of the constituency's population was female and 48.3% (45,646) was male. The national corresponding proportions in 2016 was 50.6% female and 49.4% male (see Figure 3).

Figure 3: Male to Female Population



Age cohorts

Figure 4 below shows the distribution of the female and male population of Dublin Rathdown according to five-year age bands. 22.3% of Dublin Rathdown's population was under 18 and 14.1% were aged 65 or older in 2016. As shown in Figure 5 overleaf, the corresponding national measures were 25% aged under 18 and 13.4% aged 65 or older.

Figure 4: Male/Female Age Cohorts, shown as an age pyramid

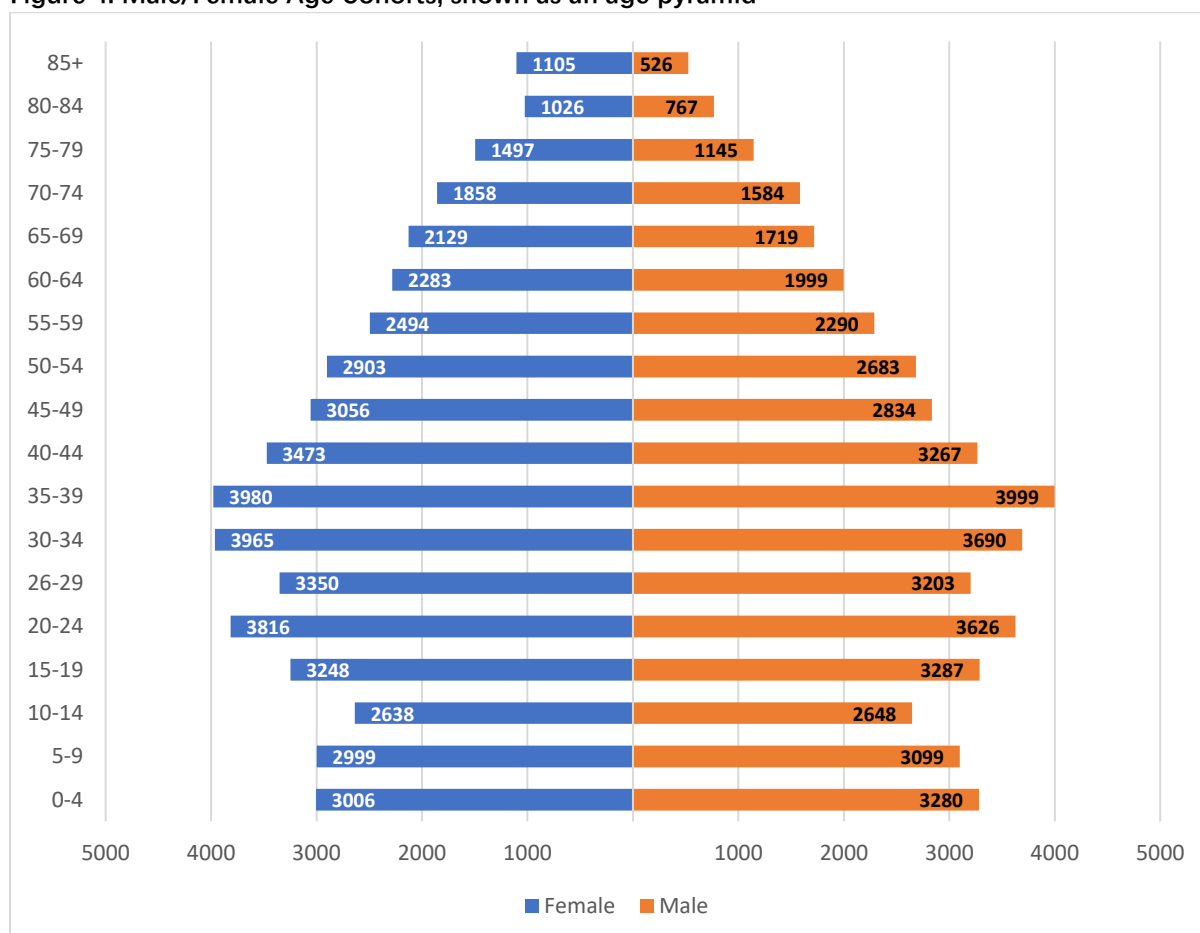
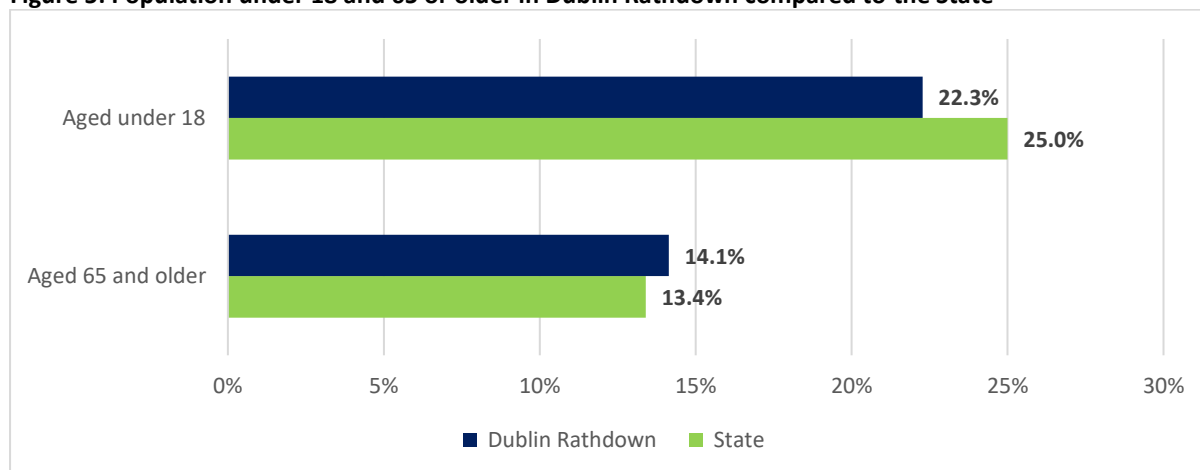


Figure 5: Population under 18 and 65 or older in Dublin Rathdown compared to the State



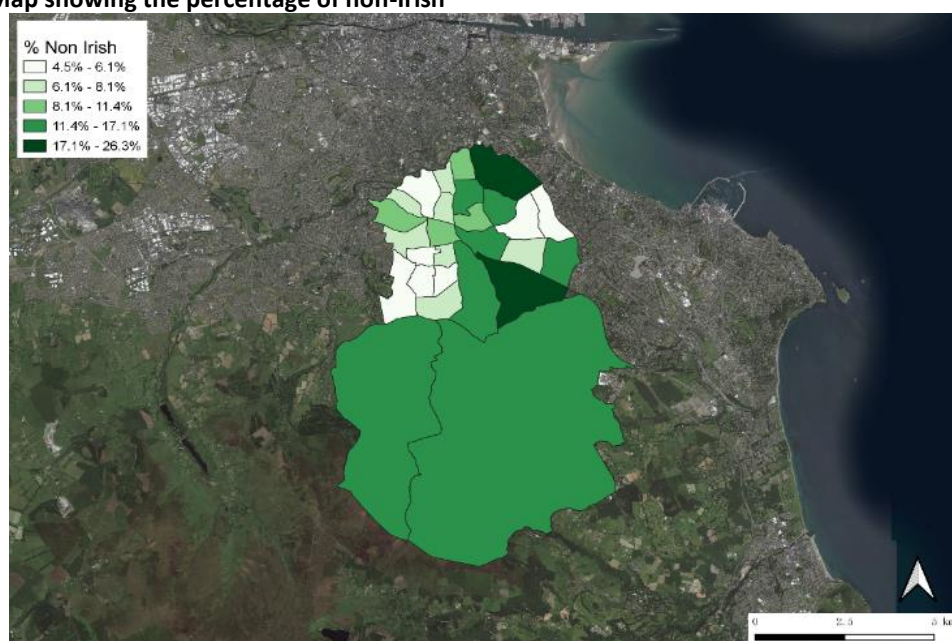
Nationality

Table 1 shows the comparison in the profile of nationality in Dublin Rathdown with that seen nationally in 2016. The proportion of Irish and non-Irish nationals residing in Dublin Rathdown are like those seen nationally in 2016. Of the usually resident population, 86.5% stated their nationality as Irish. In the constituency, 12.6% had nationalities other than Irish, with 0.9% 'not stated'. Non-Irish nationals usually resident included those who stated their nationality as British (1.7%), Polish (1.6%), Lithuanian (0.2%), from another EU country (4.1%) or from the rest of the world (5.0%).

Table 1: Nationality in Dublin Rathdown compared to the State

Nationality	Dublin Rathdown	State
Irish	86.5%	87.0%
British	1.7%	2.2%
Polish	1.6%	2.6%
Lithuanian	0.2%	0.8%
Other EU	4.1%	3.1%
Rest of the World	5.0%	2.7%
Not Stated	0.9%	1.5%

Figure 6: Map showing the percentage of non-Irish



Ethnicity

Table 2 shows that 81.1% of people usually residing in Dublin Rathdown identified their ethnicity as White Irish, which is similar to the proportion for the State as a whole (82.2%). The constituency has a higher proportion of usual residents that identify as Asian or Asian Irish than nationally (3.7% compared to 2.1%) but a smaller proportion than the State of those who identify as Black or Black Irish (0.9% compared to 1.4%).

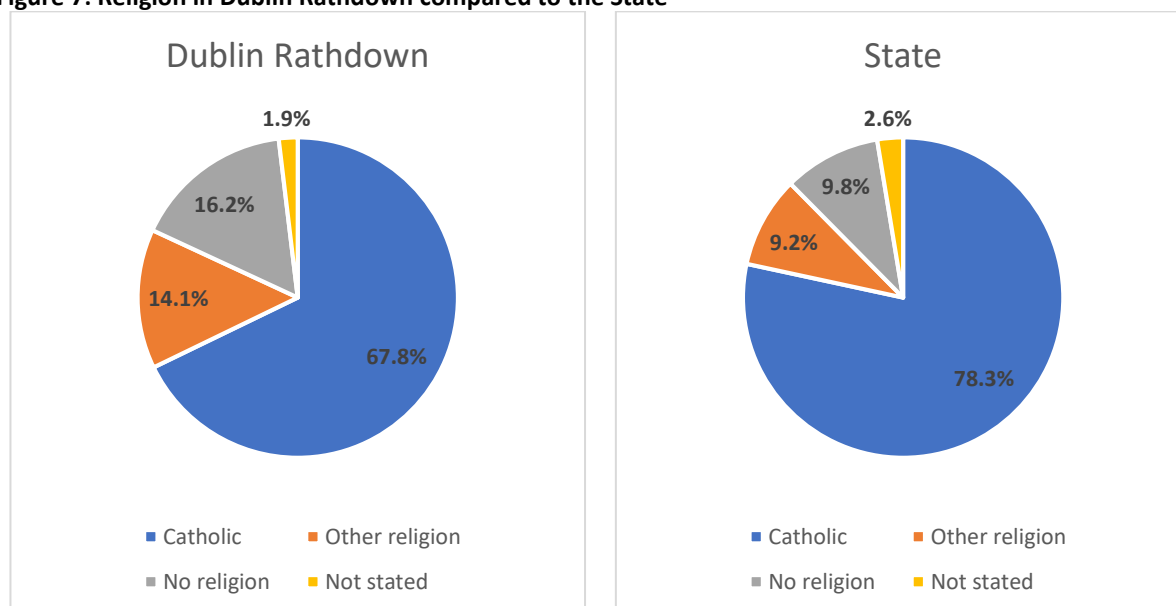
Table 2: Ethnicity in Dublin Rathdown compared to the State

Ethnicity	Dublin Rathdown	State
White Irish	81.1%	82.2%
White Irish Traveller	0.2%	0.7%
Other White Ethnicity	10.0%	9.5%
Black or Black Irish	0.9%	1.4%
Asian or Asian Irish	3.7%	2.1%
Other Ethnicity	2.5%	1.5%
Not Stated	1.6%	2.6%

Religion

The share of Catholics in Dublin Rathdown (67.8%) is lower than the national share (78.3%). A higher proportion of the usually resident population in Dublin Rathdown have no religion than seen nationally (16.2% compared to 9.8%) and a higher proportion report having 'other religion' than seen nationally (14.1% compared to 9.2%).

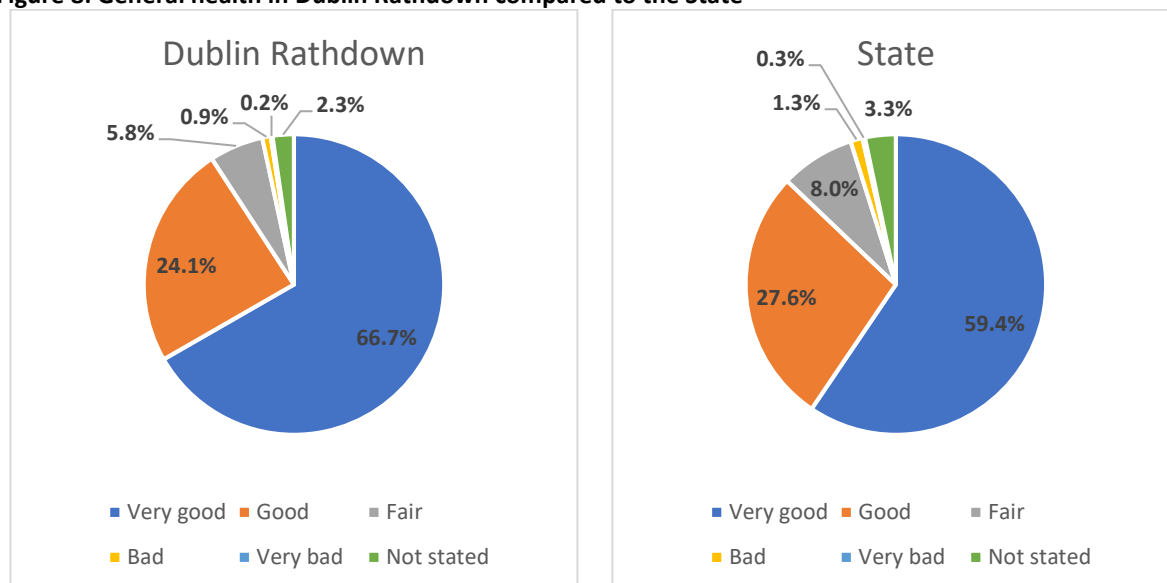
Figure 7: Religion in Dublin Rathdown compared to the State



General Health

In Dublin Rathdown, 66.7% of the population described their health as very good in 2016, which is higher than the national rate of 59.4%. As shown in Figure 8 below, the constituency recorded lower than the State proportion describing their health as fair, bad and very bad respectively.

Figure 8: General health in Dublin Rathdown compared to the State



Social class²

Table 3 shows the social class makeup of Dublin Rathdown and nationally in 2016. Dublin Rathdown has a significantly higher proportion of professional workers (16.1% compared to 8.1%) than nationally. The constituency also has a similarly significant higher proportion of managerial and technical workers than nationally (39.7% compared to 28.1%).

Table 3: Social class in Dublin Rathdown compared to the State

Social Class	Dublin Rathdown	State
Professional workers	16.1%	8.1%
Managerial and technical	39.7%	28.1%
Non-manual	16.4%	17.6%
Skilled-manual	7.6%	14.1%
Semi-skilled	4.4%	10.5%
Unskilled	1.2%	3.6%
All other (gainfully employed and unknown)	14.6%	18%

² For a definition of social class as used by the CSO in the Census, see [here](#).



Economic Status and Work

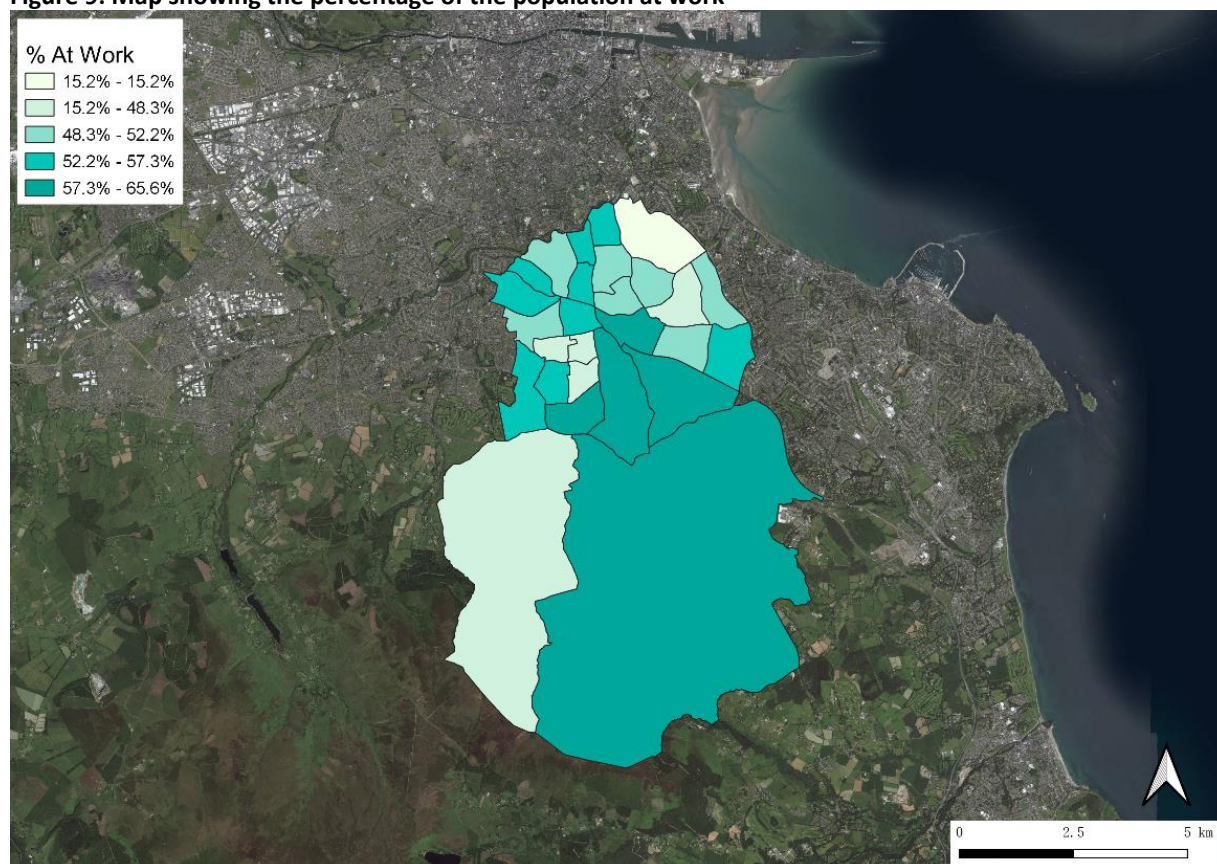
Principal economic status³

The percentage of the people whose principal economic status was 'at work' in Dublin Rathdown in 2016 (see Table 4 below) was higher than the corresponding national proportion (55.3% compared to 53.4%). There was also a higher proportion of students (16% compared to 11.4%) and marginally higher proportion of retirees (15.4% compared to 14.5%) in comparison with the State share.

Table 4: Principal economic status of Dublin Rathdown compared to the State

Principal Economic Status	Dublin Rathdown	State
At work	55.3%	53.4%
Looking for first job	0.6%	0.8%
Unemployed having lost or given up previous job	3.5%	7.1%
Student	16.0%	11.4%
Looking after home/family	7.1%	8.1%
Retired	15.4%	14.5%
Unable to work due to sickness or disability	1.9%	4.2%
Other	0.2%	0.4%

Figure 9: Map showing the percentage of the population at work



³ For explanation of terms and definitions used in Census data, see the CSO website [here](https://www.cso.ie/).

Industry

Table 5 shows those working in Dublin Rathdown and nationally by industry. Dublin Rathdown has a higher share of workers in commerce and trade (35.4% compared to 23.9%), as well as a higher proportion working in transport and communication than seen nationally (12.7% compared to 8.5%). Dublin Rathdown also has less residents working in manufacturing and industries (6.7% compared to 11.4%) than seen nationally.

Table 5: Industry breakdown in Dublin Rathdown compared to the State

Industry	Dublin Rathdown	State
Agriculture, forestry, and fishing	0.2%	4.4%
Building and construction	3.1%	5.1%
Manufacturing and industries	6.7%	11.4%
Commerce and trade	35.4%	23.9%
Transport and communications	12.7%	8.5%
Public administration	4.4%	5.3%
Professional services	23.9%	23.5%
Other	13.7%	17.8%

Occupation types⁴

Table 6 shows the occupation types that Dublin Rathdown residents work in. Dublin Rathdown has significantly higher proportions of workers in professional occupations (31% compared to 17.3%) and associate professional and technical occupations (17.1% compared to 10.9%) than the corresponding national share. The constituency also has a lower share of workers in skilled trade occupations (6.1% compared to 13.9%) than the State share.

Table 6: Occupation types in Dublin Rathdown compared to the State

Occupation Types	Dublin Rathdown	State
Managers, directors and senior officials	11.6%	7.4%
Professional occupations	31.0%	17.3%
Associate professional and technical occupations	17.1%	10.9%
Administrative and secretarial occupations	11.8%	10.0%
Skilled trades occupations	6.1%	13.9%
Caring, leisure and other service occupations	4.7%	7.3%
Sales and customer service occupations	5.6%	6.8%
Process, plant and machine operatives	2.3%	7.2%
Elementary occupations	4.3%	8.8%
Not stated	5.7%	10.3%

⁴ For details of the CSO definition of occupation, see [here](#).

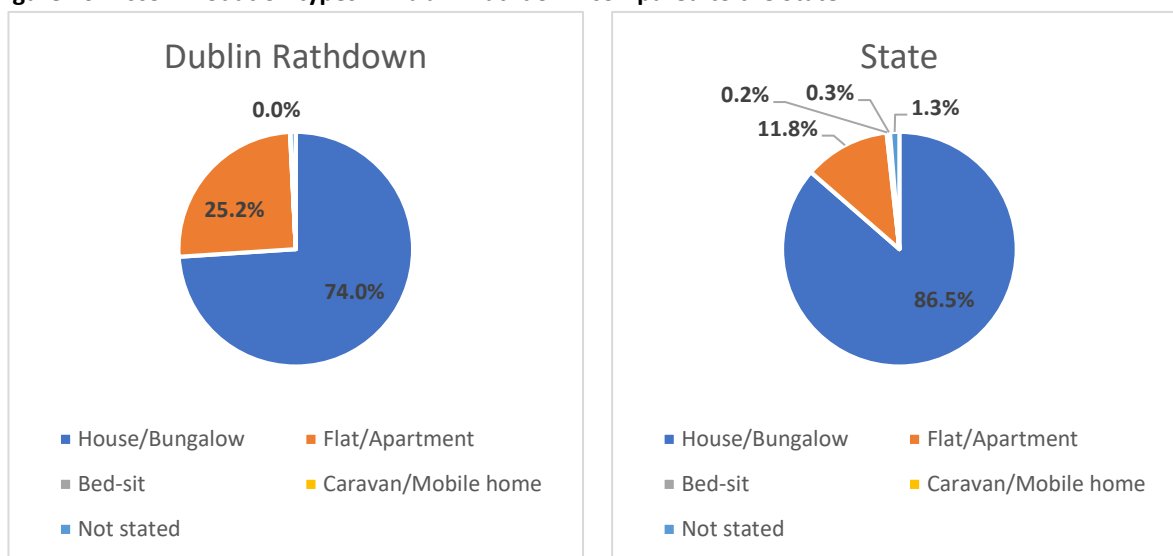


Households and Housing

Accommodation type

There were 33,659 private households in Dublin Rathdown in 2016. Figure 10 below shows that people in Dublin Rathdown are less likely to live in houses or bungalows than seen elsewhere in Ireland (74.0% compared to 86.5%). Dublin Rathdown has a considerably higher proportion of households living in flats/apartments than nationally (25.2% compared to 11.8%).

Figure 10: Accommodation types in Dublin Rathdown compared to the State



Occupancy type

Households in Dublin Rathdown are marginally more likely to own their houses with a mortgage/loan than seen nationally (32.5% compared to 31.6%) but are marginally less likely to own a house outright (35.8% compared to 36.0%). Dublin Rathdown has a higher proportion of households renting from private landlords than nationally (21.9% compared to 18.3%). Households in Dublin Rathdown are less likely to rent from a local authority (4.7% compared to 8.4%).

Figure 11: Occupancy types in Dublin Rathdown compared to the State

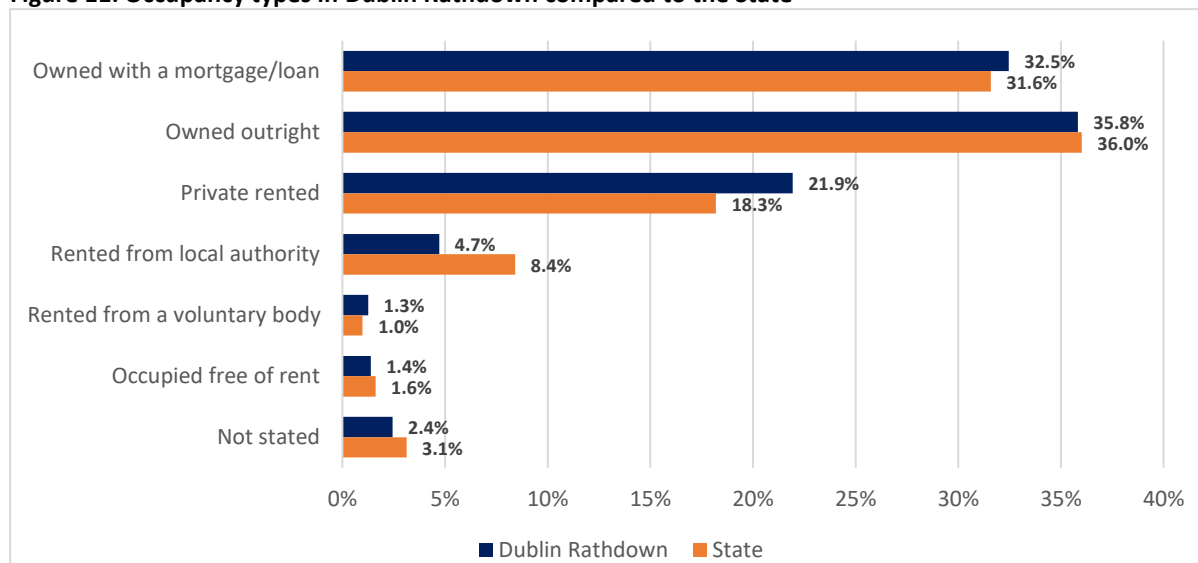
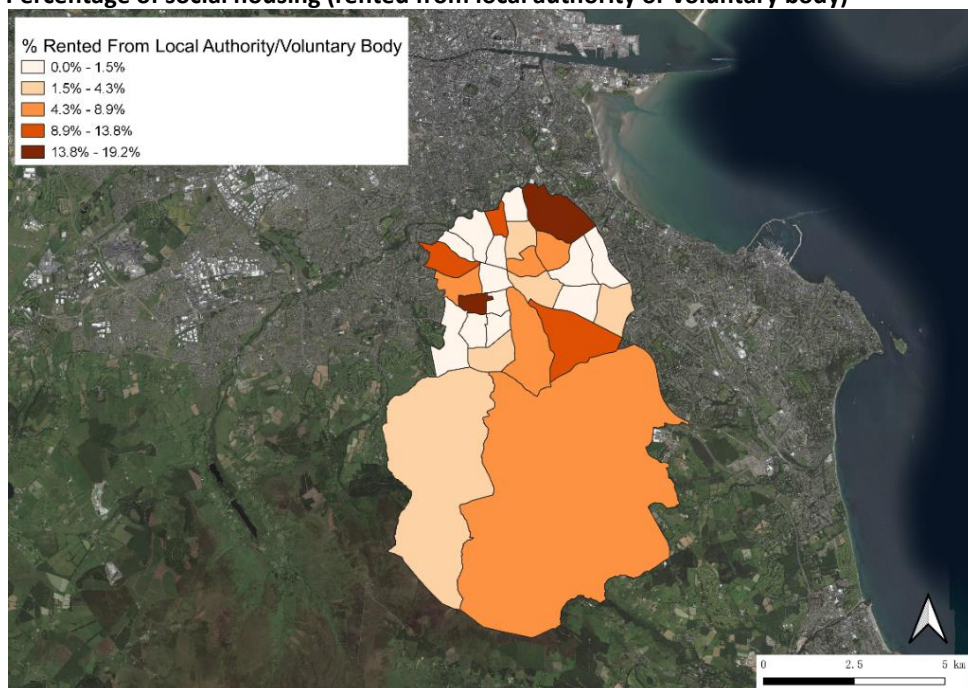
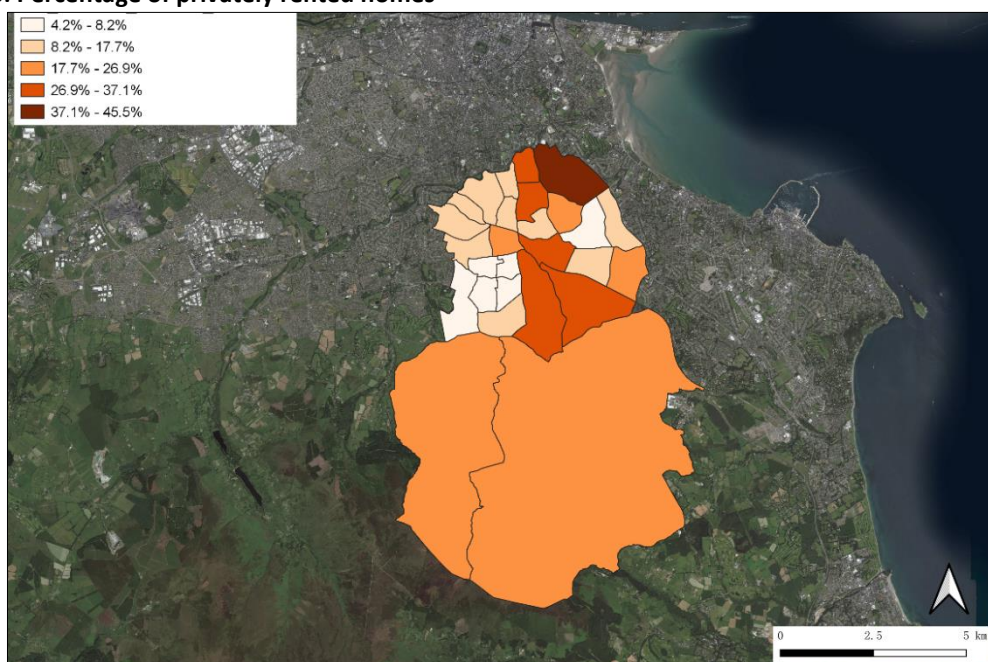


Figure 12: Percentage of social housing (rented from local authority or voluntary body)

Figures 12 (above) and 13 (below) show respectively the proportions of social and private rented housing across the EDs of Dublin Rathdown at the time of Census 2016.

Figure 13: Percentage of privately rented homes

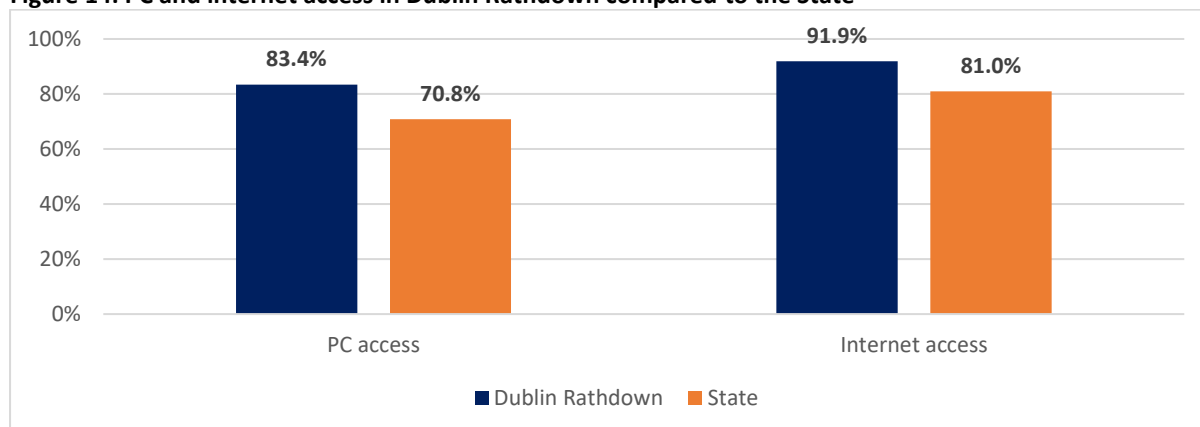
PC and broadband⁵

Dublin Rathdown has a higher rate of PC access than nationally (83.4% compared to 70.8%). Dublin Rathdown households are more likely to have access to the internet than households in the State overall (91.9% compared to 81%).⁶

⁵ In keeping with the Constituency Dashboards, the totals in this section exclude the "Not stated" category.

⁶ Internet access includes "Broadband" and "Other".

Figure 14: PC and internet access in Dublin Rathdown compared to the State



Central heating

Table 7 below shows that households in Dublin Rathdown are more likely than households nationally to use gas as their central heating source (76% compared to 33.5%). Households in Dublin Rathdown are, in contrast, less likely to use oil for central heating than the State as a whole (12.4% compared to 40.4%).

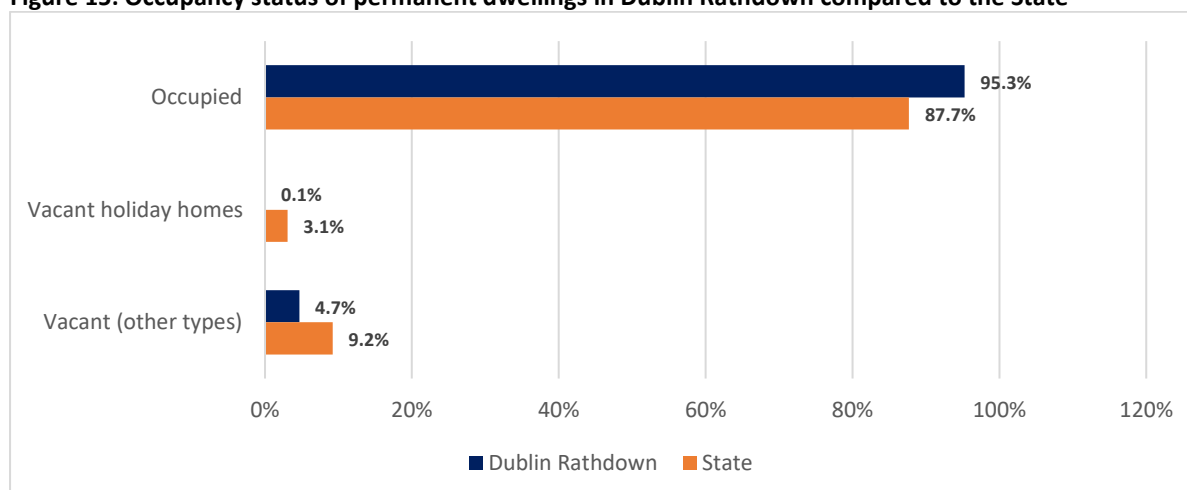
Table 7: Central heating in Dublin Rathdown compared to the State

Central heating	Dublin Rathdown	State
Oil	12.4%	40.4%
Natural gas	76.0%	33.5%
Electricity	7.5%	8.6%
Coal	0.5%	5.1%
Peat	0.1%	5.3%
LPG	0.1%	0.6%
Wood	0.3%	2%
Other	0.3%	0.7%
No central heating	0.7%	1.4%
Not stated	2.1%	2.4%

Vacant dwellings

Figure 15 below shows the vacancy rate of permanent dwellings in Dublin Rathdown compared nationally. The constituency has a lower rate of overall vacant dwellings than nationally (4.7% compared to 9.2%) and a higher rate of occupied homes (95.3% compared to 87.7%).

Figure 15: Occupancy status of permanent dwellings in Dublin Rathdown compared to the State





Transport

Mode to work, school, etc.

Figure 16 below shows that people in Dublin Rathdown are less likely to travel to work or education by car or van (as a driver or passenger) than the State comparative share (51.0% compared to 62.2%). Figure 16 also shows that Dublin Rathdown residents are more likely to use public transport as their mode of transport than the comparative share for the State as a whole (22% compared to 12.9%).

Figure 16: Mode of transportation in Dublin Rathdown compared to the State

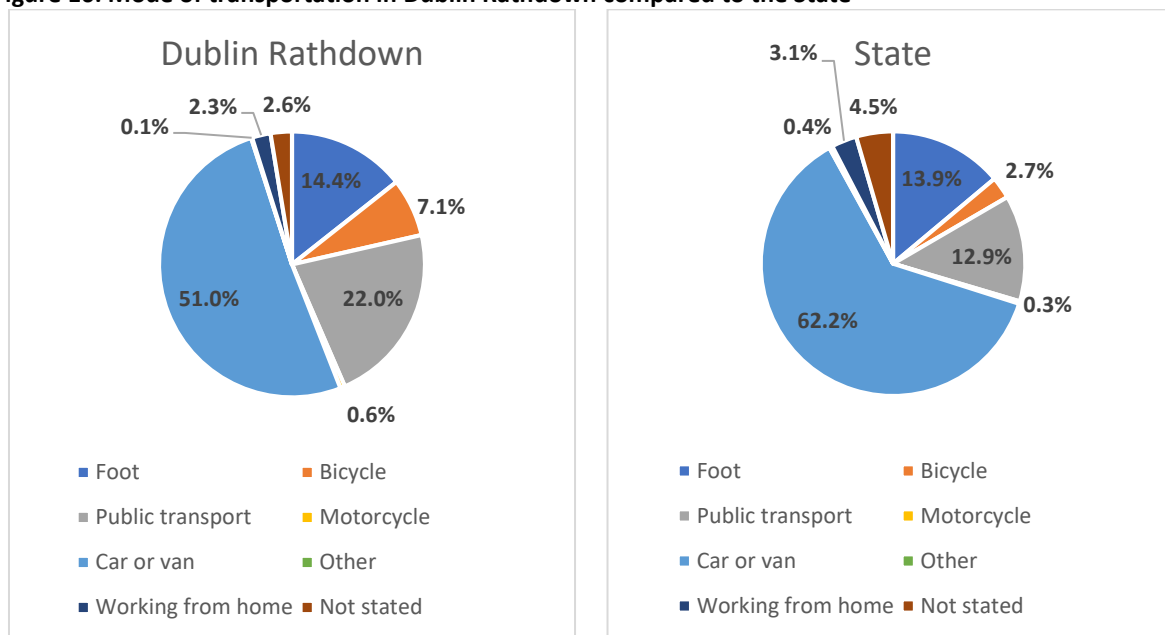
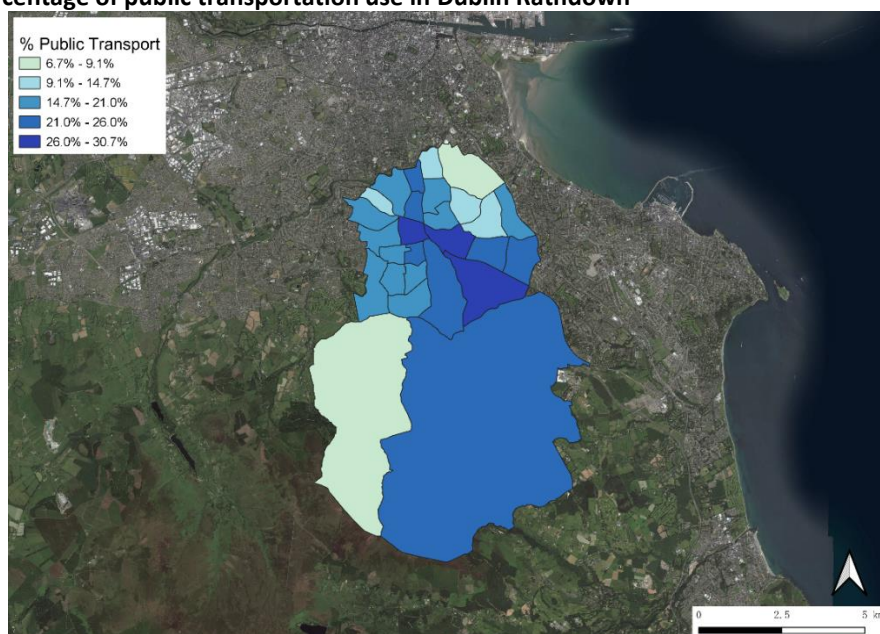


Figure 17 below shows the proportion of people in Dublin Rathdown at the ED level who use public transport as their main means of travel to work, school or college.

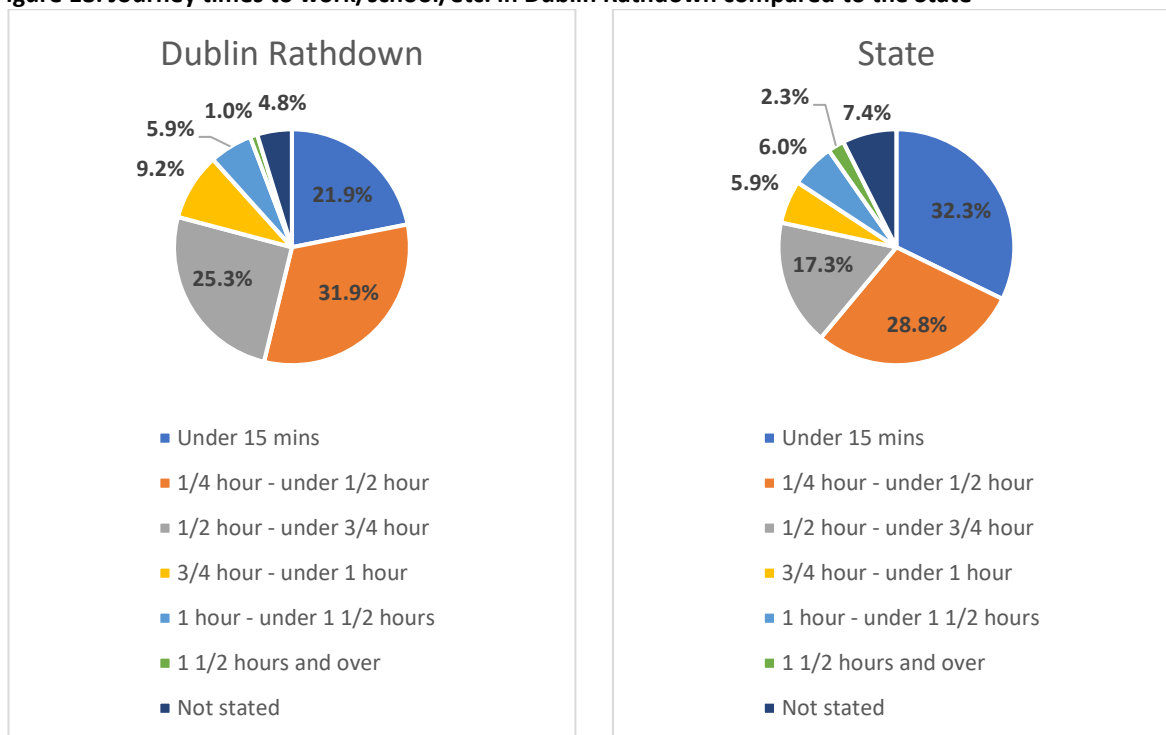
Figure 17: Percentage of public transportation use in Dublin Rathdown



Journey time to work, school, etc.

Figure 18 shows the journey times of residents in Dublin Rathdown to work or school in comparison to nationally. The constituency has a lower proportion of less than 15-minute journeys (21.9%) than nationally (32.3%). Dublin Rathdown has a higher proportion of 30- to 45-minute (25.3% compared to 17.3%) and 45 to 60-minute journeys (9.2%) than the national rate (5.9%).

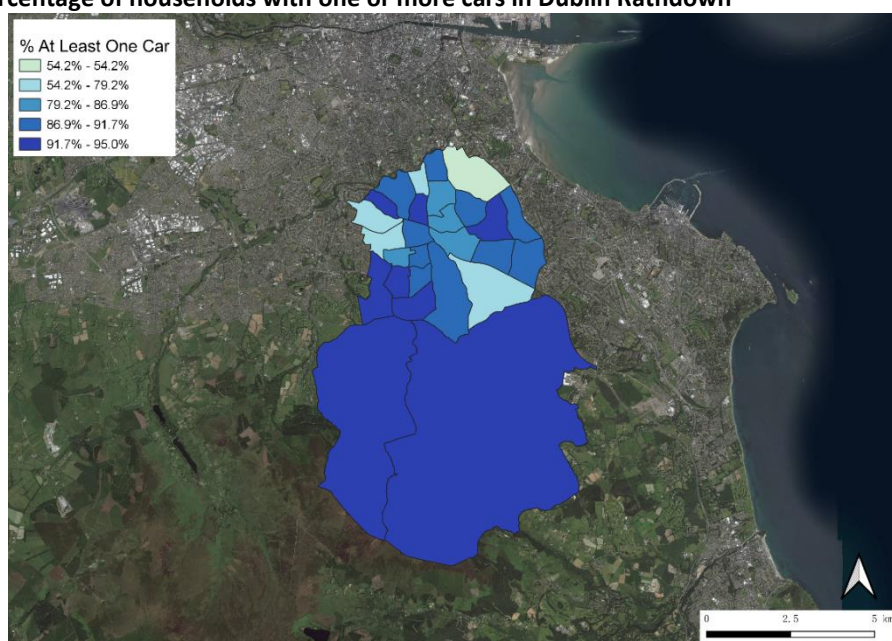
Figure 18: Journey times to work/school/etc. in Dublin Rathdown compared to the State



Car access

Figure 19 below maps at the ED level the proportion of households having one or more cars in Dublin Rathdown.

Figure 19: Percentage of households with one or more cars in Dublin Rathdown





Education

Highest education level completed/achieved

Figure 20 shows the highest education completed in Dublin Rathdown and its comparison with the national proportion. In comparison with national proportions, the constituency displays a significantly higher proportion who have completed third level education and above (51.4% compared to 28.5%) and in contrast much lower proportions who completed their highest education at primary level (5.8% compared to 12.5%).

Figure 20: Highest completed education in Dublin Rathdown compared to the State

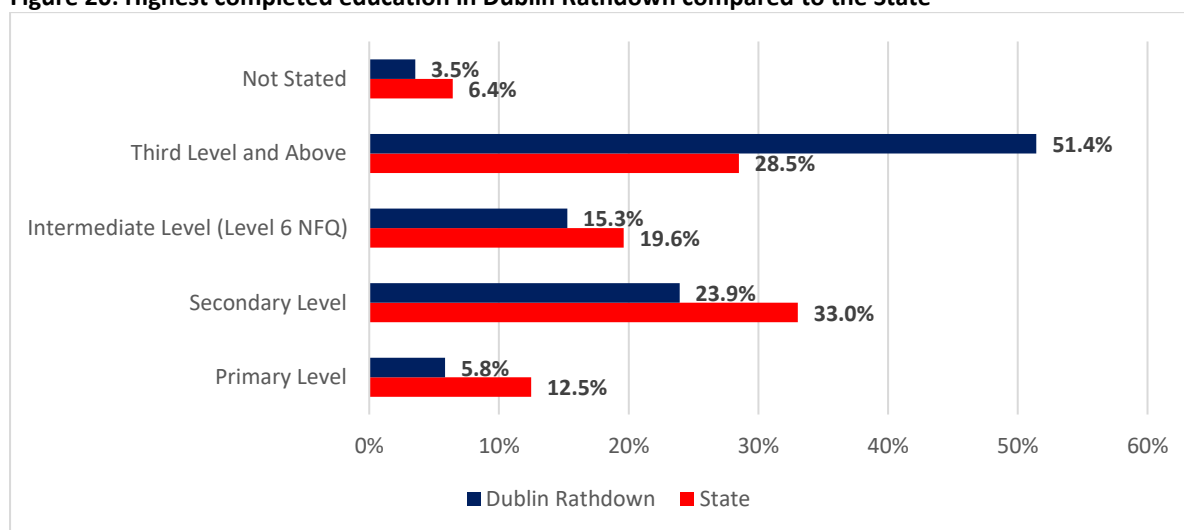


Figure 21 below shows the rates of usual residents with third level education or higher, while the following Figure 22 (overleaf) shows percentage of people in Dublin Rathdown residents at the ED level with primary education or below.

Figure 21: Percentage of people with third level education or higher in Dublin Rathdown

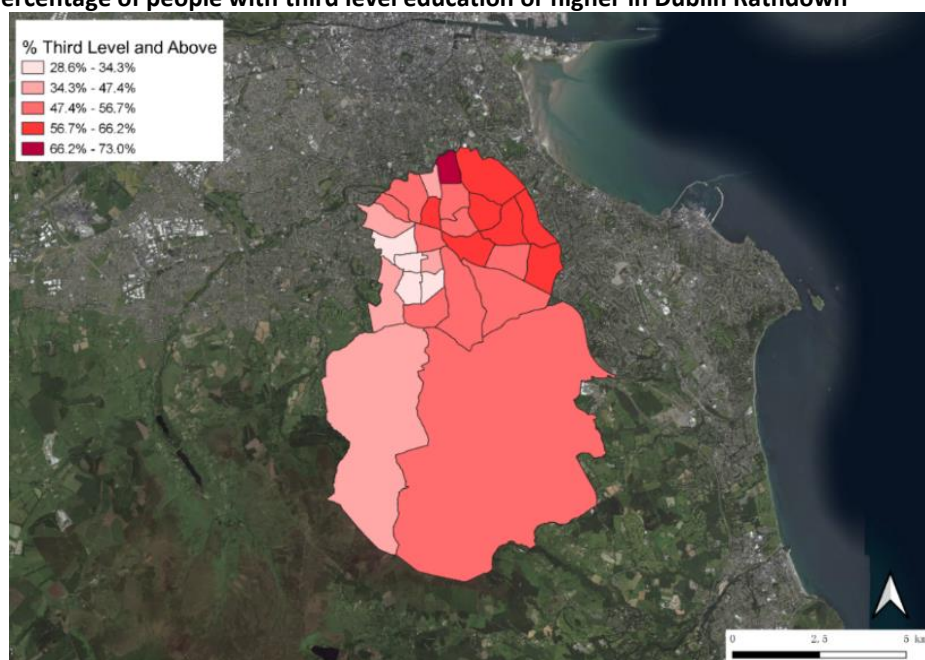
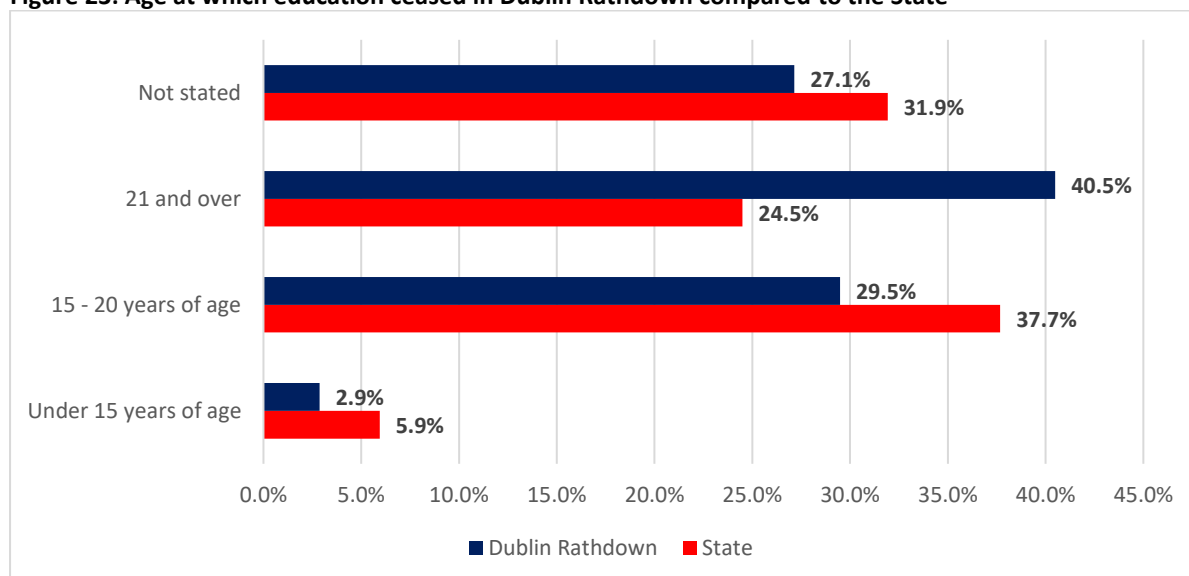


Figure 22: Percentage of people with primary education or below in Dublin Rathdown

Age at which education ceased

Figure 23 below shows the highest age at which education ceased in Dublin Rathdown compared to the State. The constituency has a markedly larger proportion of usual residents that ceased education aged 21 and over than nationally (40.5% compared to 24.5%). Proportionally fewer people in Dublin Rathdown completed their education between the age of 15 and 20 (29.5% compared to 37.7%) and under 15 years of age (2.9% compared to 5.9%) than in the State overall.

Figure 23: Age at which education ceased in Dublin Rathdown compared to the State

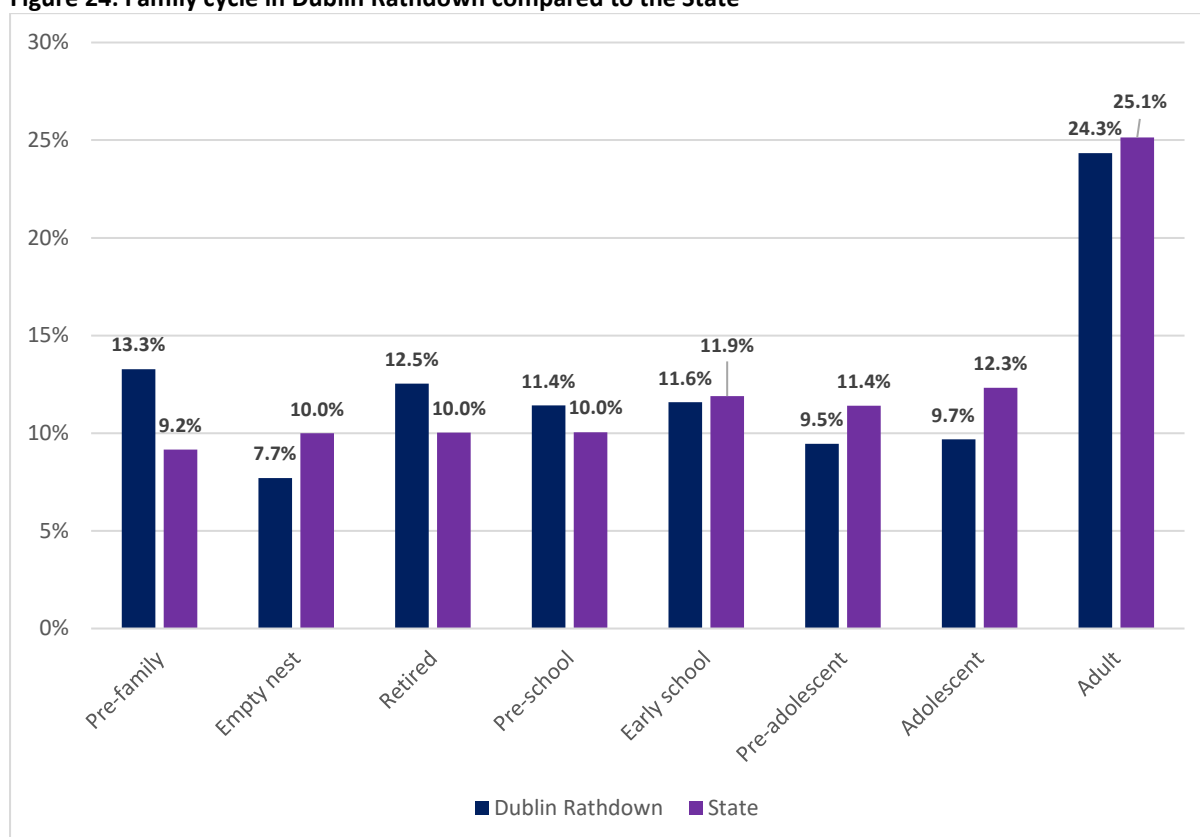


Families

Family cycle⁷

In Dublin Rathdown, there are 23,717 family units. Figure 24 shows the breakdown of the number of families in the constituency according to their stage of the family cycle and its comparison to the national picture. In Dublin Rathdown, the proportion of pre-families (13.3%) and retired families (12.5%) is higher than nationally (9.2% and 10% respectively). The proportion of families with pre-adolescent (9.5% compared to 11.4%) and adolescent children (9.7% compared to 12.3%) was lower than nationally.

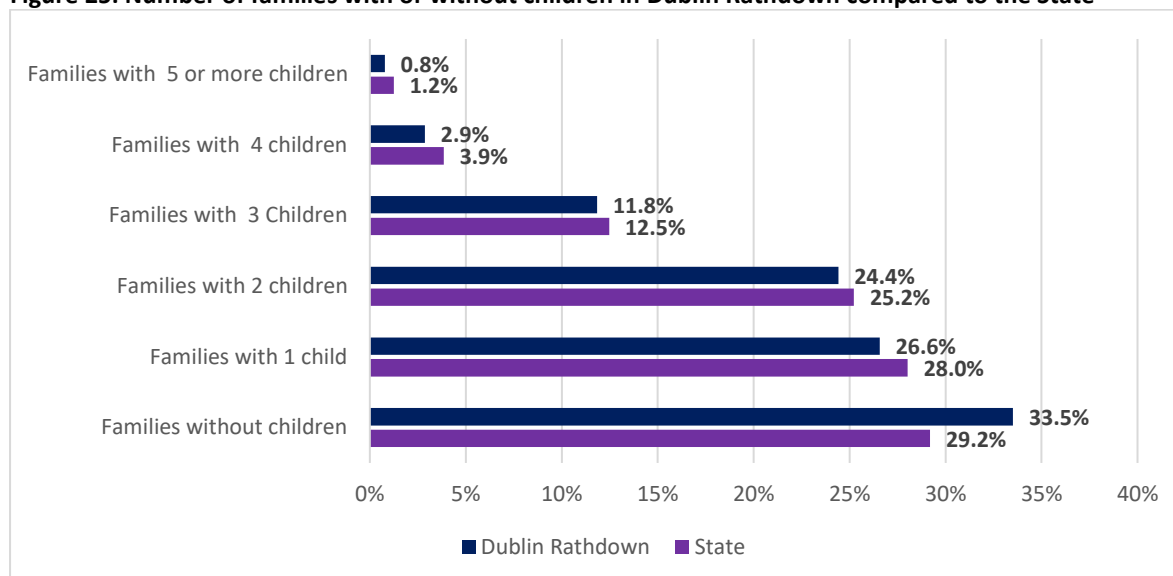
Figure 24: Family cycle in Dublin Rathdown compared to the State



Families with or without children

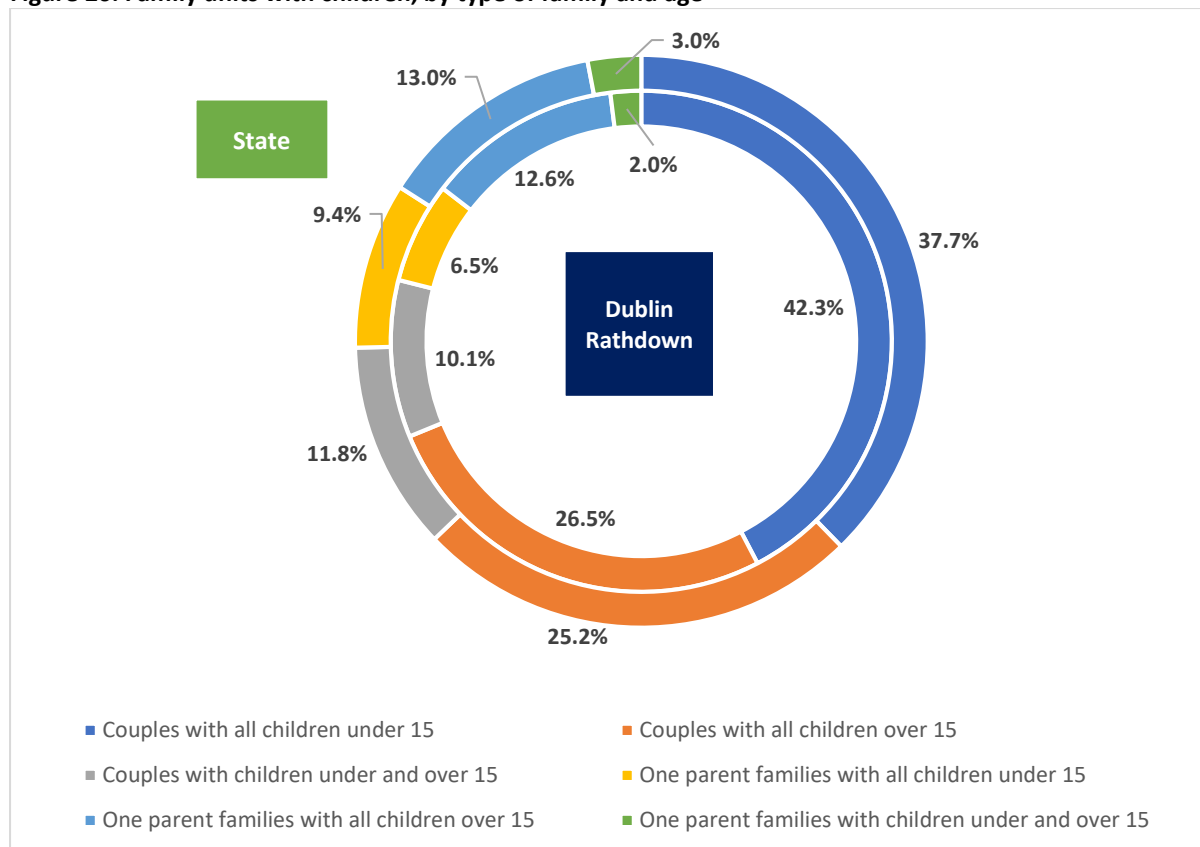
Figure 25 (overleaf) compares Dublin Rathdown and the State in terms of families with and without children. Dublin Rathdown has a higher proportion of families without children than nationally (33.5% compared to 29.2%).

⁷ For the CSO's definition of family cycle as used in the Census, see [here](#).

Figure 25: Number of families with or without children in Dublin Rathdown compared to the State

Family type

There are 15,769 families with children in Dublin Rathdown. 12,448 (78.9%) of these families were couples with children and 3321 (21.1%) were one parent families. Figure 26 below shows the proportion of family types with children (under and over 15) in 2016 for Dublin Rathdown and nationally. In the constituency, there was a higher proportion of couples with children under 15 than nationally (42.3% compared to 37.7%) and lower proportion of one parent families with children under 15 (6.5% compared to 9.4%).

Figure 26: Family units with children, by type of family and age



Contact:

Houses of the Oireachtas
Leinster House
Kildare Street
Dublin 2
D02 XR20

www.oireachtas.ie
Tel: +353 (0)1 6183000 or 076 1001700
Twitter: @OireachtasNews

Library & Research Service
Tel: +353 (0)1 6184701
Email: library.and.research@oireachtas.ie

Connect with us

