

## ECONOMIC GROWTH

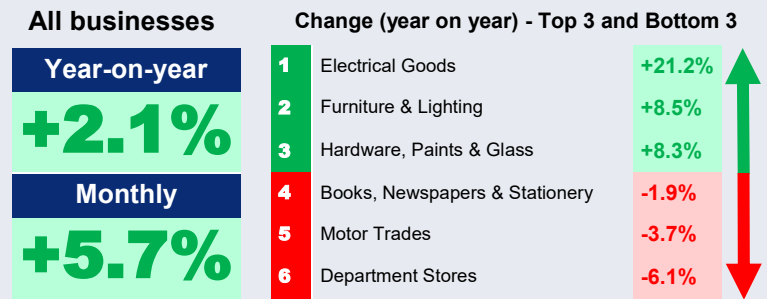
Overall / expenditure growth - seasonally adjusted at constant 2017 prices (Q2 2019)

	GDP	GNP	Expenditure category	Quarterly change (Compared to Q1 2019)	Annual change (Compared to Q2 2018)
Q2 2019	€84.6bn	€61.5bn	Personal Consumption	+0.8%	+2.6%
Quarterly change (compared to Q1 2019)	+0.7%	-2.8%	Govt. Expenditure	+1%	+3.7%
	+€573m	-€1.76bn	Capital Investment	+182%	+223%
Full year 2018	€321.4bn	€250.0bn	Exports	+2.6%	+10.7%
Annual change (2018 compared to 2017)	+8.3%	+6.5%	Imports	+43%	+60.8%
	+€24.3bn	+€15.2bn			

Source: CSO - National Accounts Q2 2019 (September 2019). See [FAQs](#). Figures referenced above refer to real GDP and GNP (GDP/GNP at constant market prices) and are chain linked and referenced to 2017.

## RETAIL SALES

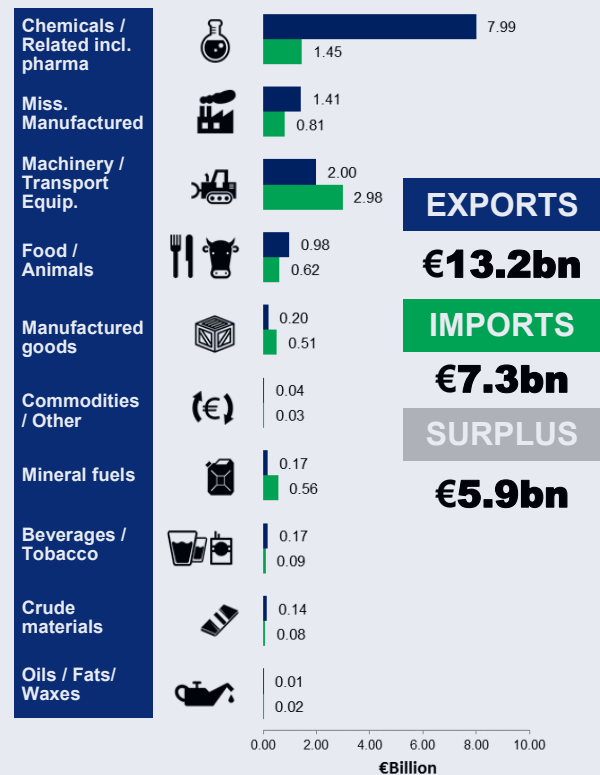
Volume of sales change (annual / monthly) - seasonally adjusted (August 2019, provisional)



Source: CSO - Retail Sales Index (September 2019)

## GOODS TRADE

Composition of Irish trade (July 2019), seasonally adjusted



### MAIN MARKETS

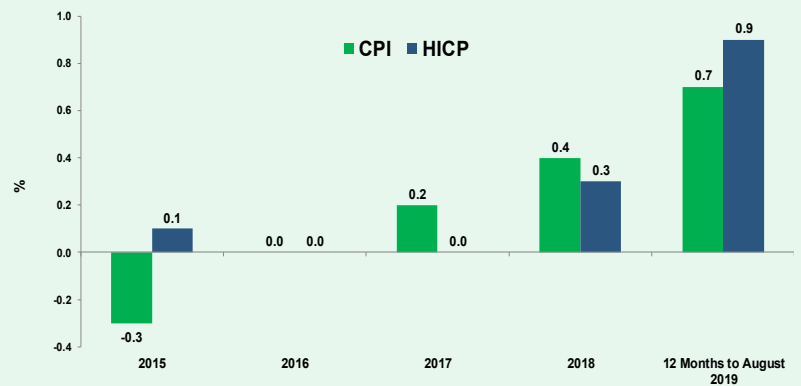
	Total EU (incl. UK)	United Kingdom	USA & Canada
<b>EXP.</b>	€6.5bn	€1.3bn	€4.2bn
	49%	10%	32%
<b>IMP.</b>	€4.1bn	€1.63bn	€1.35bn
	56%	22%	19%

Source: CSO - Goods Exports and Imports (September 2019)

## CONSUMER PRICES

(August 2019)

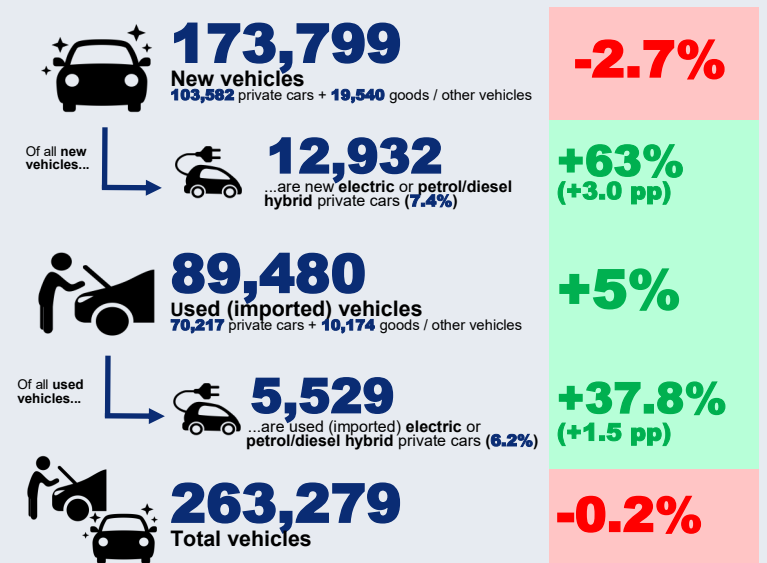
Annual change (2015-2018) and year-on-year change (12 months to August 2019)



Source: CSO - Consumer Price index (CPI) (September 2019)

## VEHICLES LICENCED

Year-on-year change from same period last year (January-August)



Source: CSO - Vehicles Licenced for the First Time (September 2019)

## UNEMPLOYMENT (August 2019)

# 5.2%

Monthly unemployment rate  
Seasonally adjusted

▼ **0.1** percentage points  
Compared to August 2018

# 126,000

Total persons unemployed  
Seasonally adjusted

▼ **6,400**  
Compared to August 2018

♂ **70,000** (5.4%)  
Males unemployed

♀ **56,000** (5.1%)  
Females unemployed

🧑 **42,600** (14.7%)  
Youth unemployment  
(ages 15-24)

**40,800**  
Persons unemployed 1 year  
or more, **31.3%** of all  
unemployment (in Q2 2019, LFS)

**1.7%**  
Long term unemployment rate  
(in Q2 2019, LFS)

Source: CSO - Monthly Unemployment ([August 2019](#)) and Labour Force Survey, LFS ([Q2 2019](#))

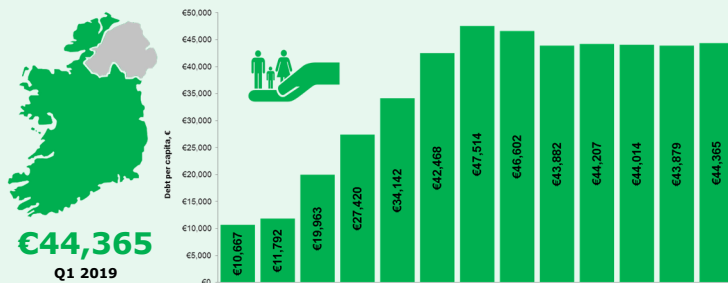
## GOVERNMENT FINANCES (Q1 2019)

### General Government (GG) Balance and Debt (face value)

	Q1 2016	Q1 2017	Q1 2018	Q1 2019
GG Balance	-€1.9bn	-€1.4bn	-€1.8bn	-€1.8bn
GG Balance % of Quarterly GDP	-2.9%	-2.0%	-2.3%	-2.2%
GG Debt (Gross)	€207.2bn	€208.6bn	€210.3bn	€215.5bn
GG Debt (Gross) % of Annualised GDP	78.3%	75.7%	68.5%	65.6%

### Gross Debt per capita

At end-Q1 2019, debt per person in Ireland was **€44,365**, down from a peak of **€47,514** (Q1 2013). This compares to a pre-crisis level of **€10,667** (Q1 2007).



### GG Revenue, expenditure and borrowing (summary)

Compared to Q1 2016, quarterly General Government revenue has increased by **+€2.28bn** while quarterly Government expenditure has increased by **+€2.17bn**.

	REVENUE	EXPENDITURE	BORROWING
Q1 2019	€18.7bn	€20.5bn	€1.8bn
Q1 2018	€17.8bn	€19.6bn	€1.8bn
Q1 2017	€17.3bn	€18.9bn	€1.4bn
Q1 2016	€16.4bn	€18.3bn	€1.9bn

Source: CSO, Government Finance Statistics - Quarterly ([July 2019](#))

## BREXIT INDICATORS (IRELAND AND THE UK - IN NUMBERS)

### TRADE IN GOODS

**22%** of Ireland's goods imports come from the UK (worth €19.9bn). This compares to 32% (€19.2bn) in 2008.

**11.5%** of Ireland's goods exports go to the UK (worth €16.1bn). This compares to 18.2% (€16.1bn) in 2008.

IMPORTS		EXPORTS	
2008	2018	2008	2018
32.4%	21.7%	18.2%	11.5%
€19.2bn	€19.9bn	€16.1bn	€16.1bn

### TRADE IN SERVICES

**9%** of Ireland's services imports come from the UK (worth €16bn). This compares to 17% (€12bn) in 2007.

**16%** of Ireland's services exports go to the UK (worth €26bn). This compares to 23% (€16bn) in 2007.

IMPORTS		EXPORTS	
2007	2017	2007	2017
17.4%	9.3%	23.2%	16.4%
€12bn	€16bn	€15.8bn	€26.3bn

### EMPLOYMENT (IN IRELAND)

# 60,100

UK nationals work in Ireland

**2.6%**  
of total employment

### UK NATIONALS EMPLOYED IN IRELAND

2006 Q4	2019 Q2
2.4%	2.6%
51,400 PEOPLE	60,100 PEOPLE

### MIGRATION

The UK is a key destination for Irish emigrants. Over the past 10 years, the number of Irish emigrants to the UK has ranged from **12,100** to **20,000** per year. In 2019, **11,600** Irish nationals emigrated to the UK (**21.2%** of all Irish emigrants).

UK immigrants are a significant proportion of total immigrants to Ireland. Over the past 10 years, the number of UK immigrants has ranged from 10,100 to 20,100. In 2019, **19,700** UK nationals immigrated to Ireland (**22.2%** of all immigrants to Ireland).

IRISH EMIGRANTS		UK IMMIGRANTS	
2009	2019	2009	2019
18.3%	21.2%	18.2%	22.2%
13,200	11,600	13,400	19,700

### TRAVEL

OUTBOUND (IRISH RESIDENTS TO THE UK)		INBOUND (GB RESIDENTS TO IRELAND)	
2010	2018	2010	2018
2.34m TRIPS	2.73m TRIPS	3.87m TRIPS	3.76m TRIPS
33.9% OF ALL TRIPS BY IRISH RESIDENTS	31.6% OF ALL TRIPS BY IRISH RESIDENTS	45.4% OF ALL TRIPS TO IRELAND	35.4% OF ALL TRIPS TO IRELAND
€984.7m SPENDING BY IRISH RESIDENTS VISITING THE UK	€1.1bn SPENDING BY IRISH RESIDENTS VISITING THE UK	n/a	n/a
16.7% OF TOTAL SPENDING BY IRISH RESIDENTS ABROAD	14.9% OF TOTAL SPENDING BY IRISH RESIDENTS ABROAD	n/a	n/a

Note: Statistics for inbound travel refer to Great Britain / GB (excluding Northern Ireland). UK figures are not available.

Sources: CSO - [Brexit Indicators: Ireland the UK in numbers](#), [External Trade statistics](#), [Outbound Travel by Irish Residents](#), [Overseas Trips to Ireland](#), and L&RS calculations.