

ECONOMIC GROWTH

Overall / expenditure growth - seasonally adjusted (Q4 2018 and 2018 (preliminary))

	GDP	GNP	Expenditure category	Quarterly change	Annual change
Q4 2018	€81.9bn	€62.9bn	Personal Consumption	+7.2%	+3.0%
Quarterly change	+0.1%	-2.4%	Govt. Expenditure	+€1.8bn	+€2.9bn
	+€528m	-€1.6bn	Capital Investment	-2.1%	+6.4%
Full year 2018 (prelim.)	€312.5bn	€245.7bn	Exports	-€165m	+€1.9bn
Annual change	+6.7%	+5.9%	Imports	+43.4%	+9.8%
	+€19.5bn	+€13.8bn		+€7.8bn	+€6.6bn
				+11.4%	+8.9%
				+23.9%	+7.0%
				+€16.1bn	+€18.3bn

Source: CSO - National Accounts ([March 2019](#)). See [FAQs](#). Figures referenced above refer to real GDP and GNP (GDP/GNP at constant market prices).

RETAIL SALES

Volume of sales change (annual / monthly) - seasonally adjusted (May 2019, provisional)

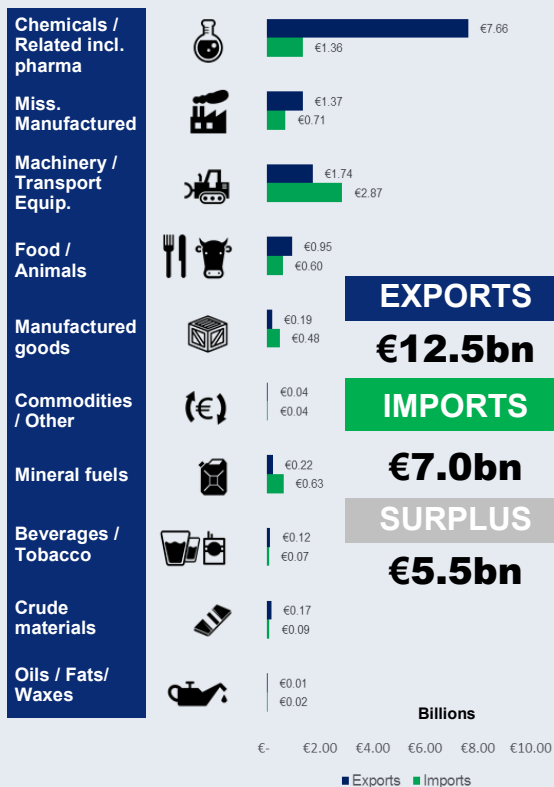
ALL BUSINESSES

Year-on-year	Change (year on year) - top 5
+1.1%	1 Electrical Goods +24.8%
	2 Household Equipment +13.2%
-2.4%	3 Pharmaceuticals, Medical, Cosmetic +9.7%
	4 Furniture & Lighting +8.4%
	5 Non-food (excl. Motor Trades, Fuel and Bars) +6.5%

Source: CSO - Retail Sales Index ([June 2019](#))

GOODS TRADE

Composition of Irish trade (April 2019)



MAIN MARKETS

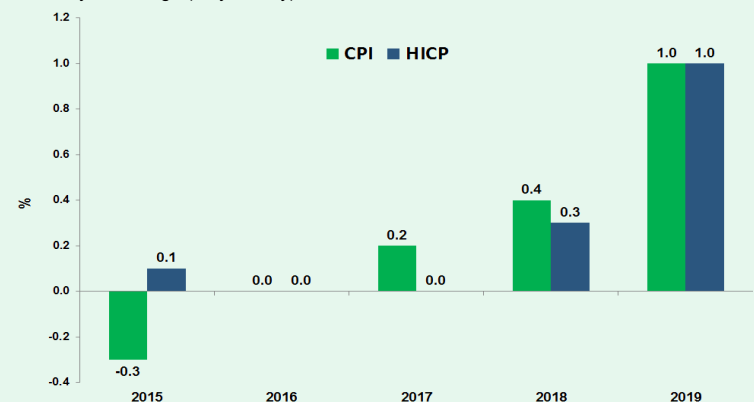
	Total EU (incl. UK)	United Kingdom	USA & Canada
EXP.	€5.7bn	€1.3bn	€4.1bn
	46%	11%	33%
IMP.	€4bn	€1.6bn	€1.3bn
	58%	23%	18%

Source: CSO - External Trade ([May 2019](#))

CONSUMER PRICES

(May 2019)

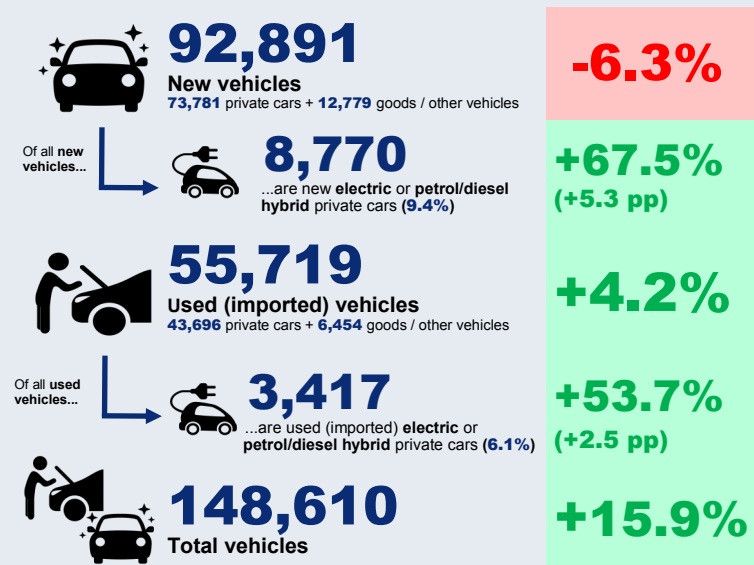
Year-on-year change (May to May)



Source: CSO - Consumer Price index (CPI) ([May 2019](#))

VEHICLES LICENCED

Year-on-year change from same period last year (January-May)



Source: CSO - Vehicles Licenced for the First Time ([May 2019](#))

UNEMPLOYMENT (May 2019)

4.4%

Monthly unemployment rate
Seasonally adjusted

▼ 1.5 percentage points
Compared to May 2018

108,200

Total persons unemployed
Seasonally adjusted

▼ 33,200
Compared to May 2018

♂ **60,800 (4.7%)**
Males unemployed

♀ **47,300 (4.2%)**
Females unemployed

🧑 **28,800 (10%)**
Youth unemployment (ages 15-24)

40,900

Persons unemployed 1 year or more, **35.7%** of all unemployment (in Q1 2019, LFS)

1.7%

Long term unemployment rate (in Q1 2019, LFS)

Source: CSO - Monthly Unemployment ([June 2019](#)) and Labour Force Survey, LFS ([Q1 2019](#))

GOVERNMENT FINANCES (Q4 2018)

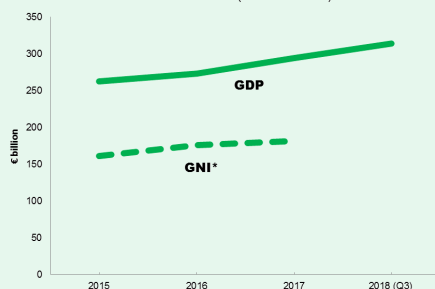
General Government Balance and Debt

	Q4 2015	Q4 2016	Q4 2017	Q4 2018
GG Balance	-1.3%	1.9%	3.1%	4.9%
GG Debt	€201.6bn	€200.7bn	€201.4bn	€206.2bn

Measuring the economy, and debt (2015-2018)

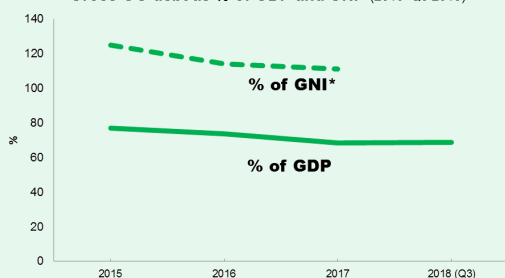
	2015	2016	2017	2018
Annual GDP (current market prices)	€262.5bn	€273.2bn	€294.1bn	€318.5bn
Annual GNI*	€161.4bn	€175.8bn	€181.2bn	TBA

GDP vs GNI* (2015- Q3 2018)



Two measurements of the economy (GDP and modified GNI, or GNI*) value the size of the Irish economy differently...

Gross GG debt as % of GDP and GNI* (2015- Q3 2018)



...which produces two different GG debt ratios.



The Government's [Summer Economic Statement](#) published in June 2019 projects that GG debt (as a % of GDP) will fall below **60%** (to **55.8%**) in 2020 and below **50%** (to **48.1%**) in 2024.

Source: CSO, Government Finances ([April 2019](#))

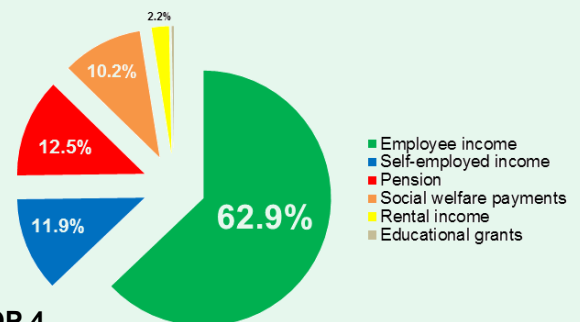
HOUSEHOLD & PERSONAL INCOME PROFILES

(Based on Census 2016 data)

Household income, by Local Authority area

Gross Median Household Income		2016
HIGHEST	Dún Laoghaire-Rathdown	€66,203
LOWEST	Donegal	€32,259
AVERAGE State		€45,256

Composition of gross household income



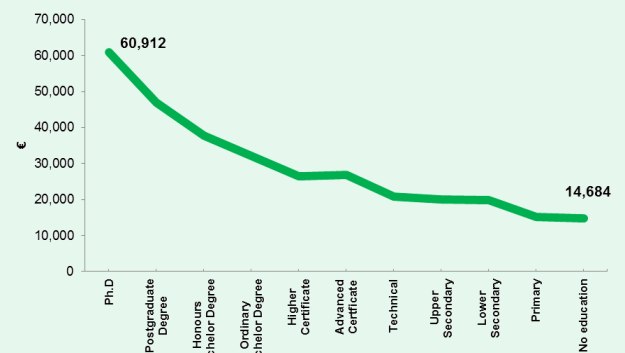
TOP 4

- 62.9%** of total household income (State) is from employment
- 12.5%** of total household income (State) is from pensions [**6.5%** State pension]
- 11.9%** of total household income (State) is from self-employment
- 10.2%** of total household income (State) is from social welfare payments

Personal income, by Local Authority area

Gross Median Personal Income		2016
HIGHEST	Dublin City	€36,999
LOWEST	Donegal	€24,626
AVERAGE State		€26,000

Gross personal income, by level of education completed



Source: CSO, Geographical Profile of Incomes in Ireland ([June 2019](#))