



Sláintecare.

Right Care. Right Place. Right Time.



Sláintecare Implementation
Strategy and Action Plan 2021-23
and
Healthy Ireland Strategy 2021-25





- The Sláintecare Fundamental Principles underpin the Sláintecare Implementation Strategy and Action Plan 2021-23
- Healthy Ireland is the “prevention” pillar of Sláintecare reform

Figure 3: Principles set out in the Sláintecare report

Sláintecare Implementation Progress 2020

Patient is Paramount

- Targeted support for Integration/Innovation Projects focussed on patient empowerment
- Community Healthcare Networks funded to provide integrated services for people nearer to home
- Integrated Care Hubs for Older People and People with Chronic Diseases
- Establishment of the Patient Safety Office

Timely Access

- Decision to fund Sláintecare to the levels envisaged in the Health Service Capacity Review (2018), including health and wellbeing, and enhanced community care
- Elective hospitals Strategic Assessment Report (SAR) and investment in Tallaght elective theatres
- Targeted waiting lists reduction initiatives
- Electronic transfer of prescriptions from GP to pharmacy
- Direct access to diagnostics for General Practice

Prevention and Public Health

- Investment in Healthy Ireland and in public health promotion, including the Obesity Policy and Action Plan, the National Physical Activity Plan and the Sexual Health Strategy, and Alcohol and Smoking prevention
- Sláintecare Communications and Citizen Engagement Campaign
- In This Together Campaign supporting the Government's Resilience and Recovery Plan, and a new public engagement Keep Well campaign

Free at the point of delivery

- Increased entitlement to GP care and reduction in prescription charges
- GP contract agreement to support chronic disease management
- Increased homecare packages

Workforce

- Additional 7000+ acute community staff
- Additional 3600 hospital staff
- Additional 600 consultant posts

Public Money and Interest

The public-only Sláintecare Consultant contract

Engagement

- Wide political and public engagement
- Staff Engagement Forum and Integration Fund Learning Network
- Cross governmental partnerships through Healthy Ireland
- Engagement with Community Voluntary Network and the Dialogue Forum on Voluntary Organisations
- Establishment of joint GP Forum

Accountability

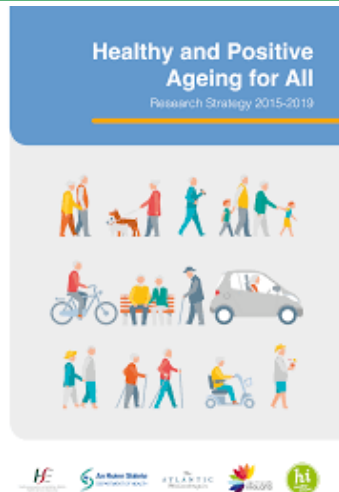
- Significant Foundational Decisions made by Government, including the establishment of the HSE Board, and the approval of the geographies for six new regional health areas

2019/2020 Policy Progress

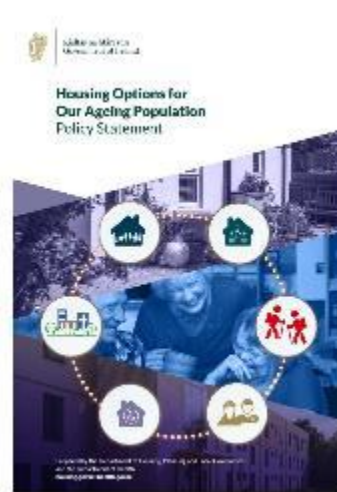
Healthy Ireland Outcomes Framework



National Healthy and Positive Ageing Initiative Indicators Report



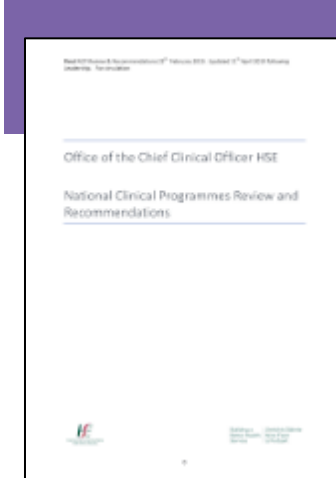
Housing Options for our Ageing Population



Independent Review Group on the role of voluntary organisations



HSE National Clinical Programmes Review and Recommendations



Eligibility & Entitlement expansion



Independent Patient Advocacy Service



Citizen & Staff Engagement and Empowerment Programme





Riádas na hÉireann
Government of Ireland

Sláintecare.

Right Care. Right Place. Right Time.

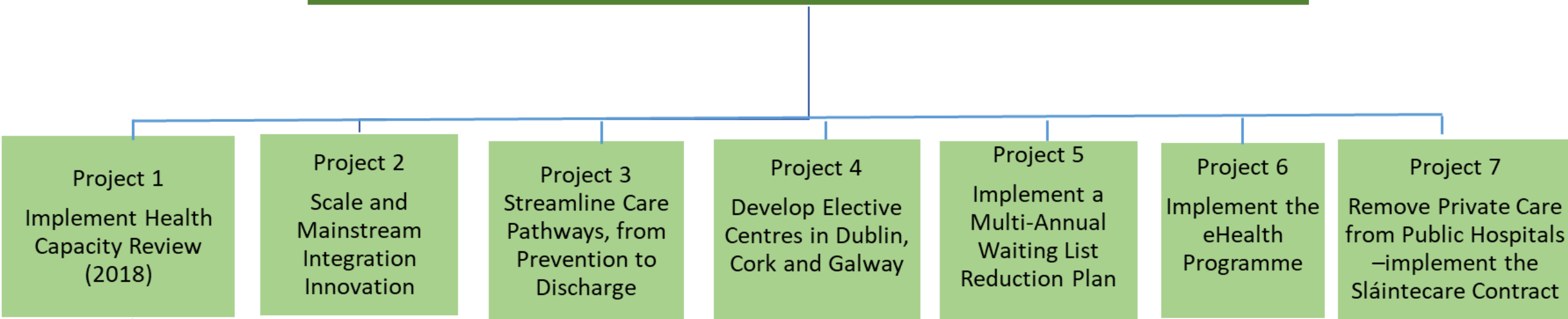


2 priority reform programmes for Sláintecare in 2021-2023

Reform Programme 1 –
Improving Safe, Timely Access to
Care & Promoting Health &
Wellbeing

Reform Programme 2 –
Addressing Health
Inequalities

Reform Programme 1: Improving Safe, Timely Access to Care and Promoting Health & Wellbeing



Project 1
Implement Health Capacity Review (2018)

Project 2
Scale and Mainstream Integration Innovation

Project 3
Streamline Care Pathways, from Prevention to Discharge

Project 4
Develop Elective Centres in Dublin, Cork and Galway

Project 5
Implement a Multi-Annual Waiting List Reduction Plan

Project 6
Implement the eHealth Programme

Project 7
Remove Private Care from Public Hospitals –implement the Sláintecare Contract

Workstream 1
Healthy Living

Workstream 2
Enhanced Community Care

Workstream 3
Hospital Productivity

Enabled by:

Staff engagement

Public engagement

Funding

Reform Programme 1

Project 1

Implement the Health Capacity Review (2018) (including +2600 hospital beds)

3 Key workstreams enabling Sláintecare to meet waiting time targets

Workstream 1 – Healthy Living

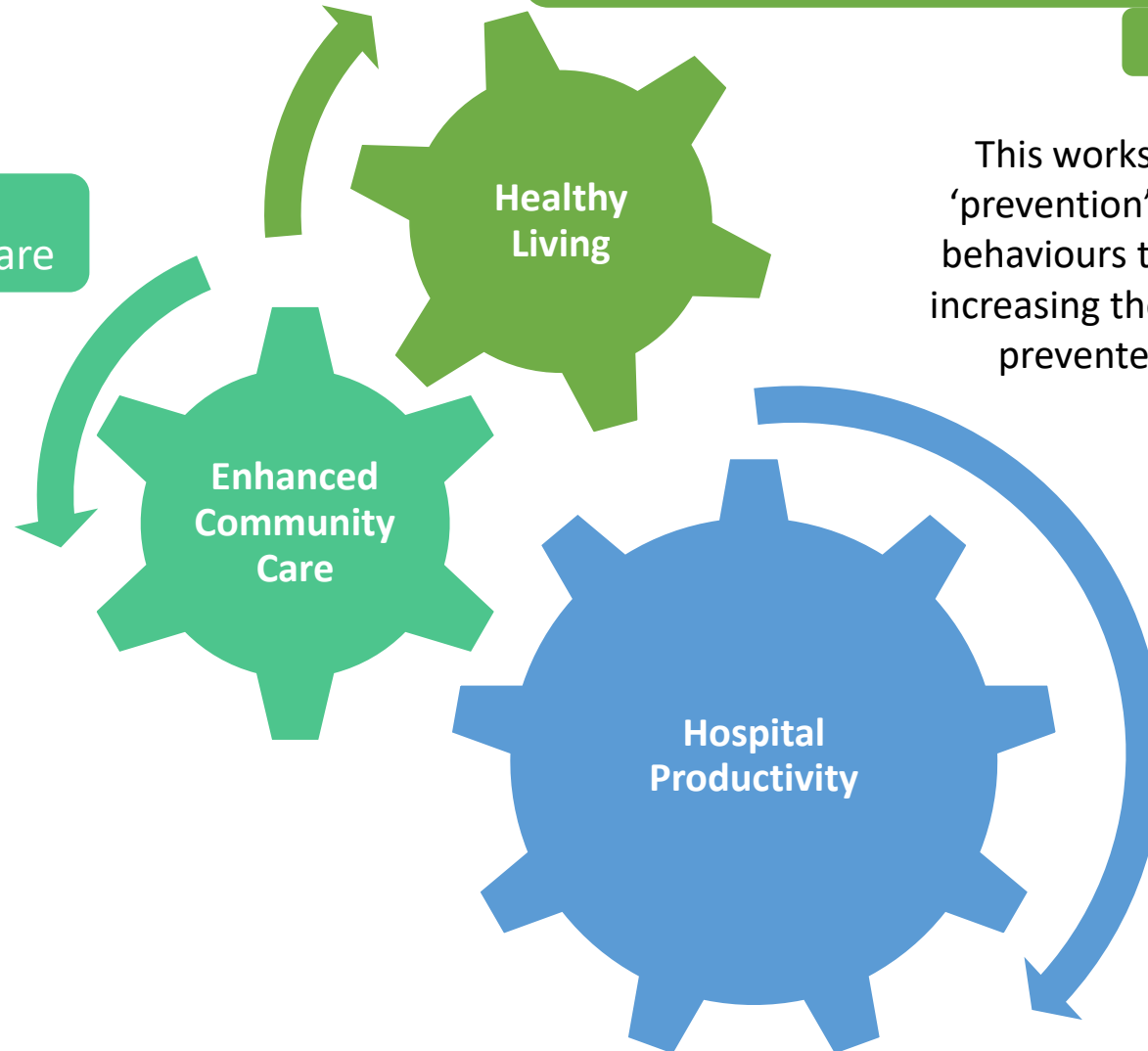
This workstream, through **Healthy Ireland**, focuses on ‘prevention’ and decreasing the prevalence of unhealthy behaviours that contribute to chronic disease, and also to increasing the degree to which diseases and conditions are prevented or detected early to allow for successful intervention.

Workstream 3 – Hospital Productivity

The purpose of the Hospital Productivity workstream is to deliver improved outcomes and a more effective use of resources through the reforming of how acute services are delivered together with hospital productivity initiatives.

Workstream 2 – Enhanced Community Care

This workstream will ensure maximum impact for citizens in avoiding hospital admission as far as possible through initiatives that will see care delivered within the community, at or near a person’s home where appropriate.





An Roinn Sláinte
Department of Health

Sláintecare.

Right Care. Right Place. Right Time.



Enhanced Community Care

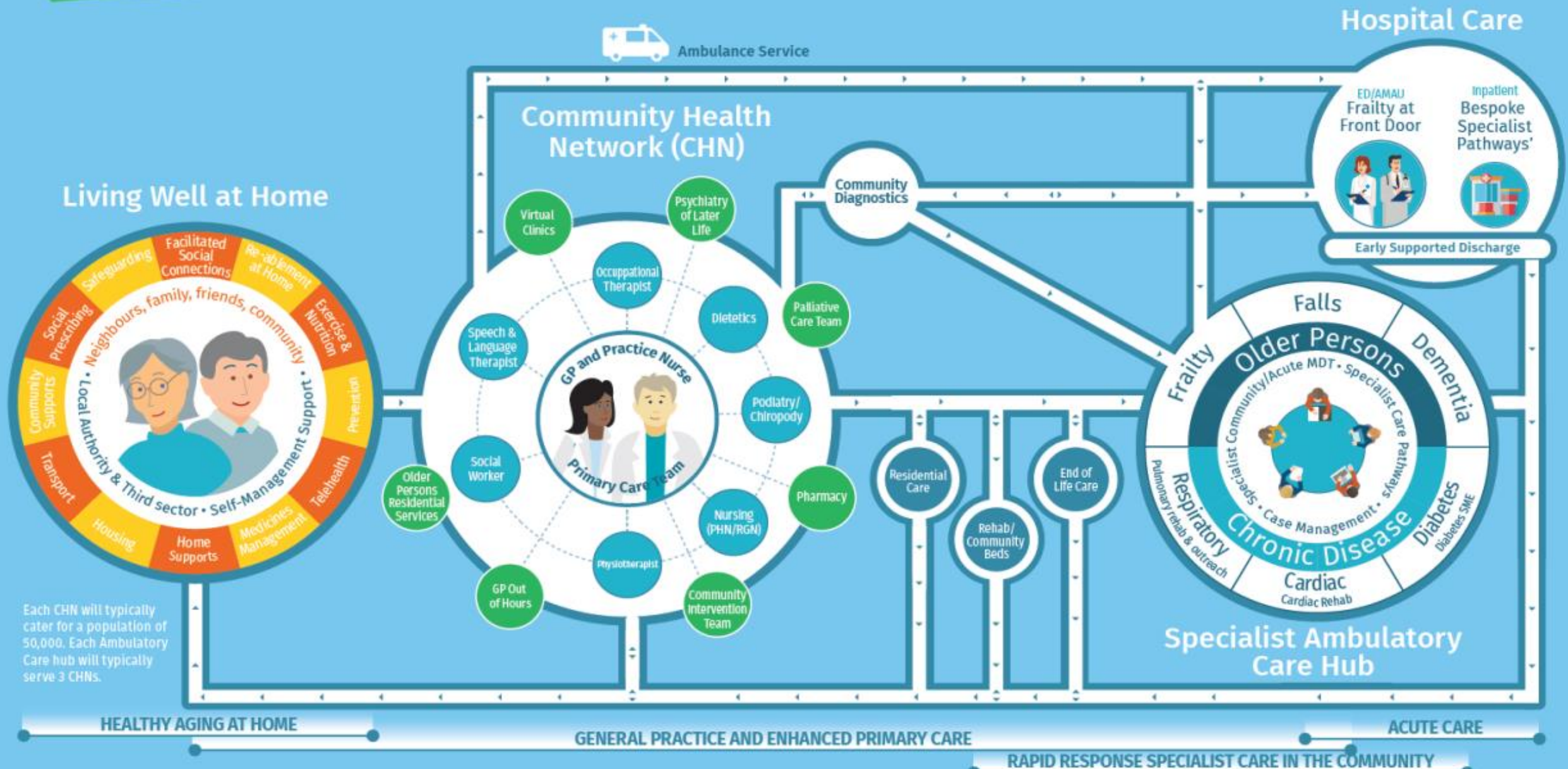


Older Persons/Chronic Disease Service Model



Shift Left of Resources & Activity

Least Intensive Setting / Care / Interventions



Each CHN will typically cater for a population of 50,000. Each Ambulatory Care hub will typically serve 3 CHNs.



An Roinn Sláinte
Department of Health

Sláintecare.

Right Care. Right Place. Right Time.



Healthy Ireland



Keep Well



Healthy Places

Healthy Homes

Healthy Communities

Healthy Cities & Counties

Healthy Schools

Healthy Campuses

Healthy Clubs

Healthy Workplaces



KEEPING ACTIVE



MINDING YOUR BODY



EATING WELL



MINDING YOUR MOOD



SWITCHING OFF

KEEPING IN CONTACT



An Roinn Sláinte
Department of Health

Sláintecare.

Right Care. Right Place. Right Time.



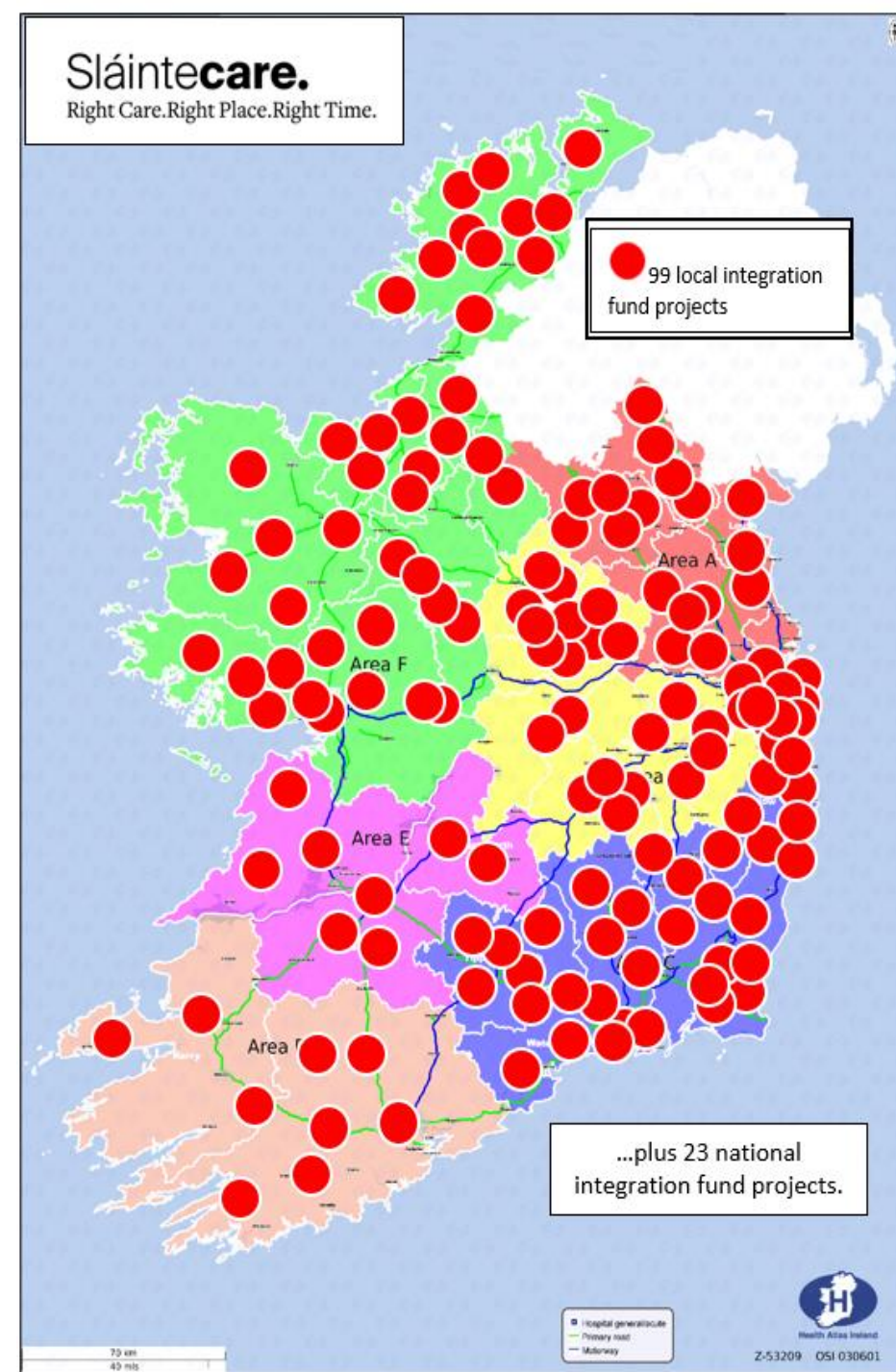
Programme 1: Project 2
Scale and Mainstream
Integration Innovation



Integration Innovation – Safer Care

Sláintecare Integration Funds 2021-23

- Scaling 2019-2020 successful projects
- Audit informed, research driven, incident prevention or process improvement or productivity projects (GP Research Hub; NOCA audits into action)
- Integrated patient pathway improvement projects
- Integrated wider determinants partnerships



Sláintecare Integration Fund projects





An Roinn Sláinte
Department of Health

Sláintecare.

Right Care. Right Place. Right Time.

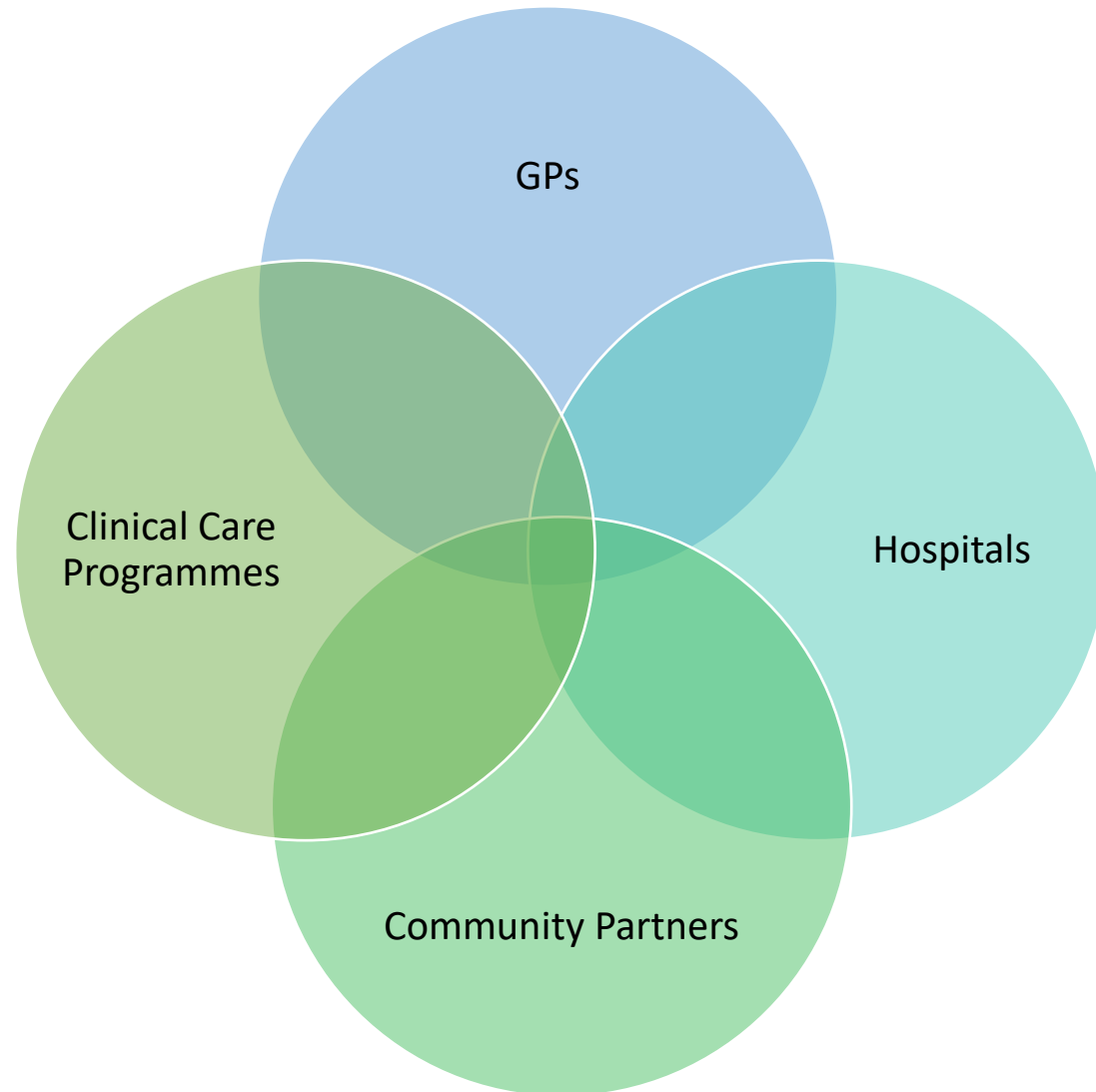


Programme 1: Project 3
Streamline Care Pathways,
from Prevention to Discharge



Streamline Care Pathways, from prevention to discharge

Develop pathways to provide better links across care settings





An Roinn Sláinte
Department of Health

Sláintecare.

Right Care. Right Place. Right Time.



Programme 1: Project 4
Develop Elective Centres



Elective Hospital Facilities

- New dedicated elective-only hospital facilities in Dublin, Galway and Cork
- High volume, low complexity procedures
- Strategic Assessment Report approved as part of Public Spending Code process
- Site selection process underway





An Roinn Sláinte
Department of Health

Sláintecare.

Right Care. Right Place. Right Time.



Programme 1: Project 5
Implement Multi-Annual
Waiting Lists Plan



Waiting Lists to be included in the Multi-annual Plan

Acute

- Outpatients
- Inpatients
- Day cases
- Endoscopies
- Diagnostics

Palliative Care (adults)

- In-patient specialist palliative care services
- Specialist palliative homecare services

Community

- Therapy assessments
- Therapy treatments
- Diagnostics

Rehabilitation

- NRH

Other

Improved access to care for socially excluded groups – including Travellers, Roma, people who are homeless, asylum seekers, refugees and people who use drugs.

Social Care

(Older persons & Dementia)

- Home Help
- NHSS
- Residential Care (DROC)
- Intermediate care
- Respite Care
- Day care services
- Home (DROC)
- Therapies in community services
- Memory Technology Resource Room (MTRR) Services
- Dementia Advisors Service

Disabilities

- Residential placements (incl. emergency)
- Move from congregated disability settings
- Supported living for <65 year olds currently living in nursing homes
- Respite, home support and personal assistance services
- Intensive respite support
- Assessment of Need
- Therapies in community services

Mental Health

- Child and Adolescent Mental Health Services (CAMHS)
- General Adult (GAMHT)
- Counselling in Primary Care (CIPC)
- Psychiatry of Later Life (POLL)
- Bed Waitlist
 - CAMHS
 - National Forensic Mental Health Service (NFMHS)



An Roinn Sláinte
Department of Health

Sláintecare.

Right Care. Right Place. Right Time.



Programme 1: Project 6
Implement eHealth
Programme



eHealth Programme





An Roinn Sláinte
Department of Health

Sláintecare.

Right Care. Right Place. Right Time.



Programme 1: Project 7
Removing private care from
public hospitals
(Sláintecare Consultant Contract)



Reform programme 2 – Addressing Health Inequalities

Develop a Citizen
Care
Masterplan

Project 1



Rollout of Healthy
Communities

Project 2



Develop Regional
Health Areas

Project 3



Implement
Obesity Policy
and Action Plan
2016-2025

Project 4





An Roinn Sláinte
Department of Health

Sláintecare.

Right Care. Right Place. Right Time.



Programme 2: Project 1
Develop a Citizen Care
Masterplan



Citizen Care Masterplan

A population health approach to service planning and funding



Population Profiling and Segmentation

Health Needs Assessment

Population Based Resource Allocation Model

Review of Eligibility Entitlement

Strategic Frameworks for: Capital Planning and Workforce



An Roinn Sláinte
Department of Health

Sláintecare.

Right Care. Right Place. Right Time.



Programme 2: Project 2
Roll out Sláintecare Healthy
Communities Programme



Sláintecare Healthy Communities Programme

- 22.5% of the population are exposed to disadvantage
- Prevalence of chronic illness is higher in more deprived areas, including stroke (2.2 times higher), coronary heart disease (2.5 times higher) and diabetes (1.4 times higher)
- This Programme will take a cross government, wider determinants of health approach, working with the communities involved – 12 government departments and local authorities
- The goal is to improve the long-term health of disadvantaged populations and improve the quality of life of individuals in those communities
- Targeted extra health supports (like Deis model) for 18 SICAP areas of disadvantage





An Roinn Sláinte
Department of Health

Sláintecare.

Right Care. Right Place. Right Time.



Programme 2: Project 3
Develop Regional Health
Areas



Regional Health Areas (RHAs)

- Geographies approved by Government.
- Business Case in development in compliance with the Public Spending Code

Objectives of RHA Implementation:

1. Clinical governance
2. Corporate governance and accountability
3. Population-based approach to service planning
4. Integration of community and acute services





An Roinn Sláinte
Department of Health

Sláintecare.

Right Care. Right Place. Right Time.



Programme 2: Project 4
Implement Obesity Policy
and Action Plan 2016-2025

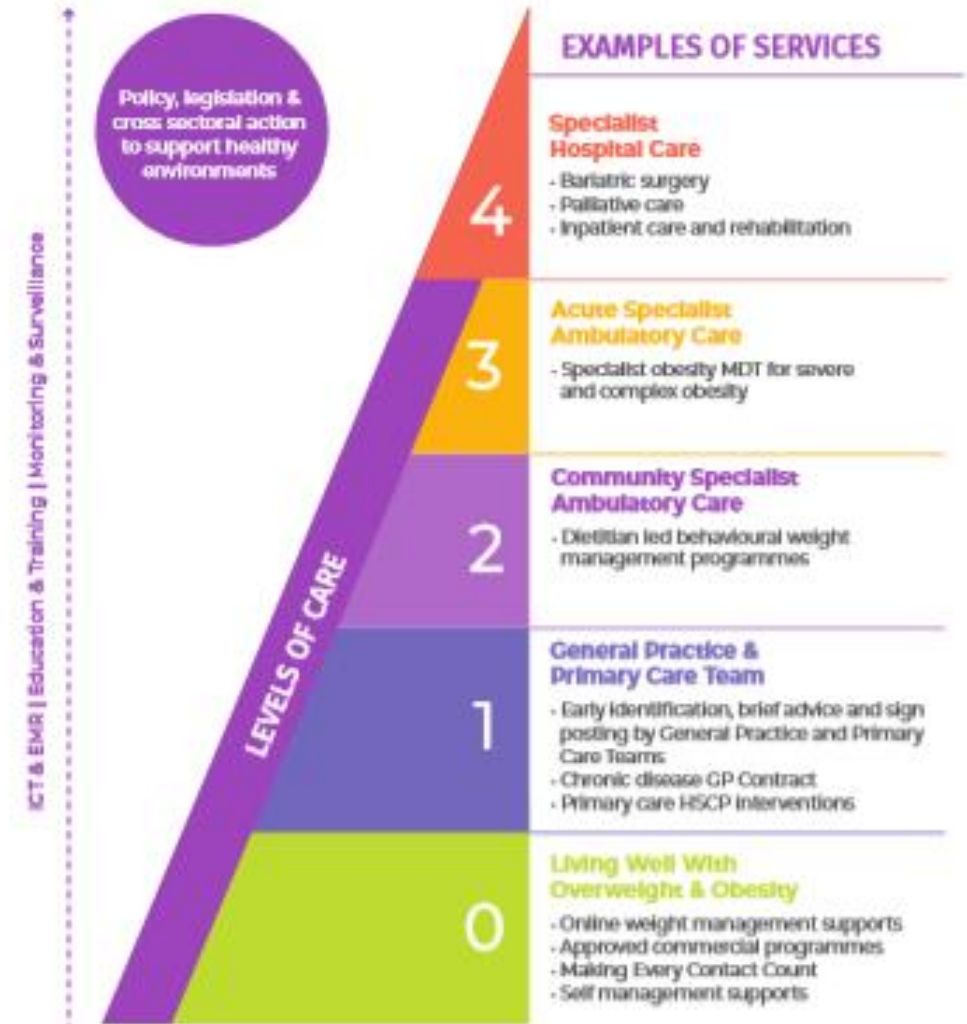


Cross Departmental Obesity Action Plan



The Model of Care for Adults with Overweight and Obesity

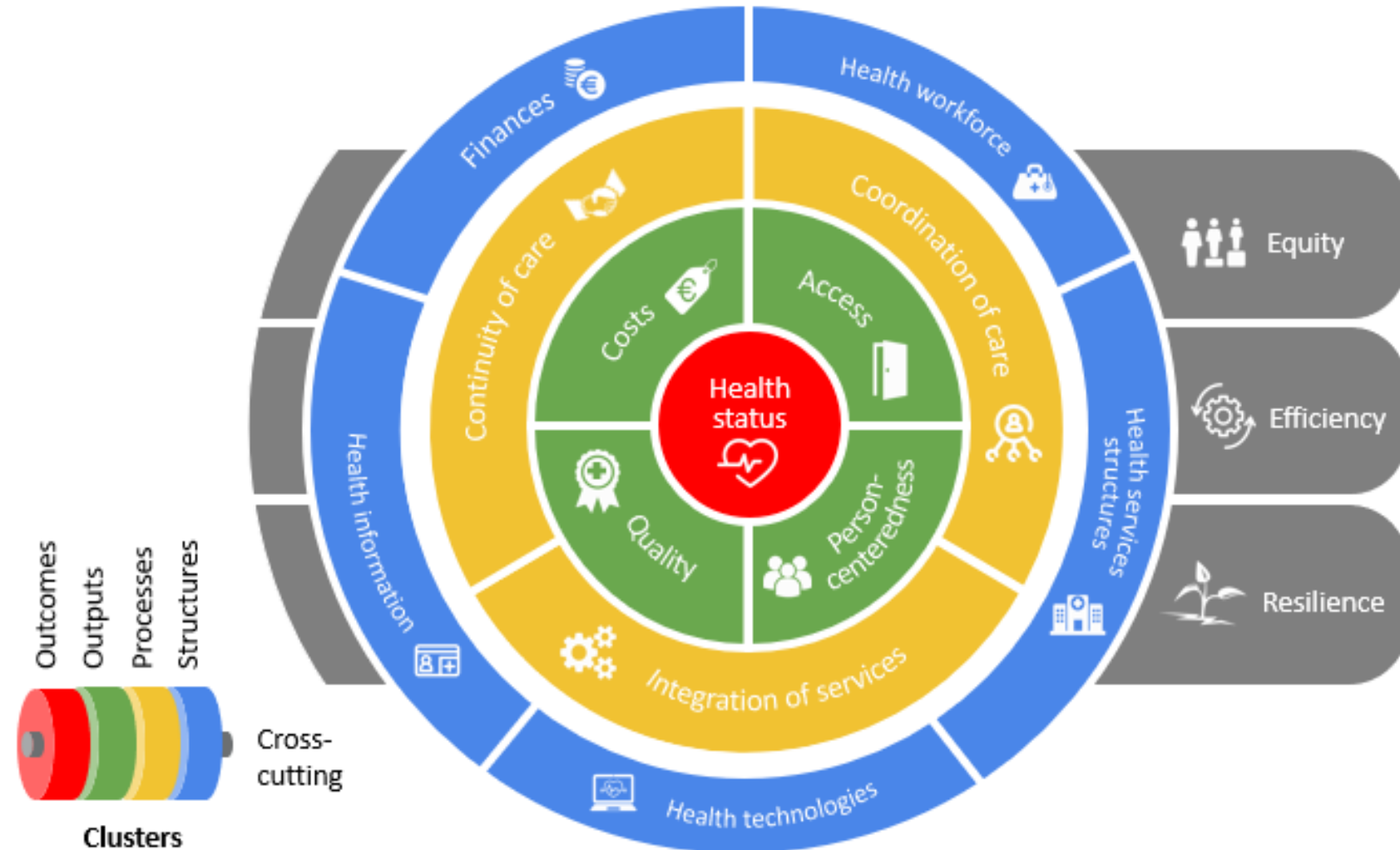
5 LEVELS OF CARE



Programme Management, Monitoring and Evaluation



- Reporting
- HSSP
- Evaluation



€1.235billion Sláintecare Reform Budget for 2021

Amount 2021	Funding Areas	Amount 2021	Funding Areas
+€467 million Increased acute and community bed capacity to progress implementation of the 2018 Capacity Review	<p>Critical care beds</p> <p>Funded critical care beds will increase to 321 by end of 2021, an increase of 66 over funded 2020 levels. The Capacity Review targeted an increase to 330 by end of 2021.</p> <p>Acute Beds</p> <p>Funded acute inpatient beds will increase to approximately 11,699 by end of 2021, an increase of 1,146 in acute beds over 2020 funded levels. The Capacity Review (<i>after reforms</i>) targeted an increase to 11,900 beds by end 2021 and 12,600 by end of 2031.</p> <p>Community Beds (including sub-acute beds)</p> <p>Funded community, repurposed rehab and sub-acute beds totalling 1,250, bringing the total capacity of public short stay beds to just under 3,500 by end of 2021.</p> <p>Sub Acute Beds</p> <p>Funded sub acute beds will increase to approximately 135 by end of 2021, an increase of 74 over 2020 funded levels. Sub-acute care is intensive, but to a lesser degree than acute care. This care can be delivered in a setting outside an Acute Hospital (e.g. community hospital).</p>	+€5m Community Paramedicine/ Critical Care Retrieval/ Pathfinder/ 1813 Medical Helpline/NEOC	The ongoing strategic evolution of the National Ambulance Service from an Emergency Medical Service to a Mobile Medical Service will continue to deliver enhanced system integration and reduce pressure on acute hospitals.
		+€15 million Health & Wellbeing	Focus on preventative measures as well as promoting health and wellbeing in disadvantaged areas.
		+€90 million Additional Services for People with Disabilities	Additional residential places, respite, day and personal assistant services. Additional multi-disciplinary services and assessment of need for children and adults. Further progress strategy for community inclusion - Time to Move On from Congregated Settings. Implement the recommendations of the Autism Spectrum Disorders Report.
		+€23 million Mental Healthcare expansion	To progress "Sharing the Vision".
		+€33 million revenue +€95 million capital eHealth	Leveraging technology to modernise the delivery of care - improve linkages, streamline communication flows and support data-driven projects to support timely and informed decision making.
		+€121 million Implementing National Strategies & Expert Reviews	Implementing National Strategies & Expert Reviews including: National Cancer Strategy, National Maternity Strategy, A Trauma System for Ireland, Paediatric Model of Care, NAS Strategy, Antimicrobial Resistance in Infection Control, Organ Donation & Transplant, National Gynaecology Plan, The Women's Health Taskforce, a range of Social Care Strategies, Sláintecare Consultant Contract, Safe Staffing, Nursing Home Expert Review, Public Health Workforce, Staff Health & Wellbeing
+€150 million Enhanced Community Services (Total €186 million investment 2020-21)	This will support the redesign of care pathways to make care more accessible in the community including the expansion of the Community Health Networks, Community Intervention Teams and specialist, integrated care teams such as the Integrated Care Programme for Older People (ICPOP) and Chronic Disease Management (CDM). These measures will see 3,000+ staff recruited, with a particular focus on nursing and community therapists such as physios, OTs and SLTs.	+€78 million Improving Access to Care	Alternative Care Pathways Acute Hospital Service Restart Cancer Screening
+€25 million GP access to diagnostics	Approx. 136,000 additional diagnostic tests in 2021.	€1.235 billion (incl. €136m capital) TOTAL INVESTMENT	
+€133 million Social care expansion	Additional 5 million hours of home support will be provided in 2021 above NSP 2020 level bringing total funded hours to 24.26 million. The Capacity Review targeted an increase to 22.7 million hours by end 2021 and 36.5 million hours by end of 2031.		

Sláintecare, working together, across the system



Sláintecare.



An Roinn Sláinte
Department of Health



Thank You

#RightCareRightPlaceRightTime