

An Roinn Oideachais
Department of Education



Ms Éilis Fallon,
Committee Secretariat
Committee of Public Accounts
Houses of the Oireachtas
Dublin 2

12th February 2021

Subject: Follow-up to the Committee of Public Accounts Hearing on 2018 and 2019 Appropriation Accounts of the Department of Education and Skills (21 October 2020)

Ref: S00134 PAC33

Dear Ms Fallon,

I refer to your letter of 21st January requesting further information in respect of my correspondence dated 13th November 2020 which provided information requested by the Committee at the meeting dated 21st October.

I attach herewith notes for the information of the Committee in respect of the items which were raised in your letter.

The Department has received a copy of the Committee's report on the Examination of the 2018 and 2019 Appropriation Accounts for Vote 26, which was published today and will be examining the report and its recommendations.

Yours sincerely,

Seán Ó Foghlú
Secretary General

Information Notes for the Committee of Public Accounts
Department of Education

Item 1: Prefabricated/Temporary Buildings & Item 2: Details of schools using temporary structures

A detailed explanation of the situation concerning prefabricated or temporary buildings, to include details of value for money having regard to the length of time the temporary building was in use prior to completion of a permanent facility, the number of students being educated in this type of accommodation, and statistics regarding temporary accommodation that has been rented for more than five, ten and 15 years.

Details in tabular format of all schools using temporary structures, the duration they have been used and the cost associated with them to date

The Department's priority is to ensure that every child has access to a physical school place.

While it is the policy of the Department to ensure a high standard of permanent accommodation for all schools, in the context of a rapidly increasing school population over the last decade or more it is sometimes necessary to make use of temporary accommodation to meet the accommodation needs of schools.

The changing landscape in relation to enrolments means that accommodation requirements can vary between short-term, medium-term and long-term and this can impact on the type of accommodation solution put in place to address same.

The first graph below (Figure 1) highlights the rapid increase in enrolments at primary level over the last 15 years. It also shows the very significant reduction in enrolments that is projected to occur over the next 15 years – which will have a significant impact on overall accommodation requirements.

Maximising the opportunities to achieve value for money involves matching, as best as possible, the accommodation requirement with the appropriate permanent or temporary accommodation solution. However, even where an accommodation requirement is for the long-term it may not be possible to put in place permanent accommodation in all cases, which then triggers a requirement for an interim accommodation solution. For example, two key factors that impact on the timeline for providing a permanent building for a new school are the identification and acquisition of a suitable site and obtaining planning permission. While good progress has been made on providing better lead in periods for the establishment of new schools and opportunities for use of existing State or other school sites are maximised wherever possible, it nevertheless remains a significant challenge to be managed.

The next two graphs (Figure 2 and 3) provide an overview on the school rental budget, number of units rented and teacher numbers for the period 2008 to 2020. Detailed data for

the period prior to 2008 is not readily accessible so the information being provided in response to the queries relates to the 13 year period 2008 to 2020¹.

Figure 1: Actual and projected enrolments in primary schools 1989-2051

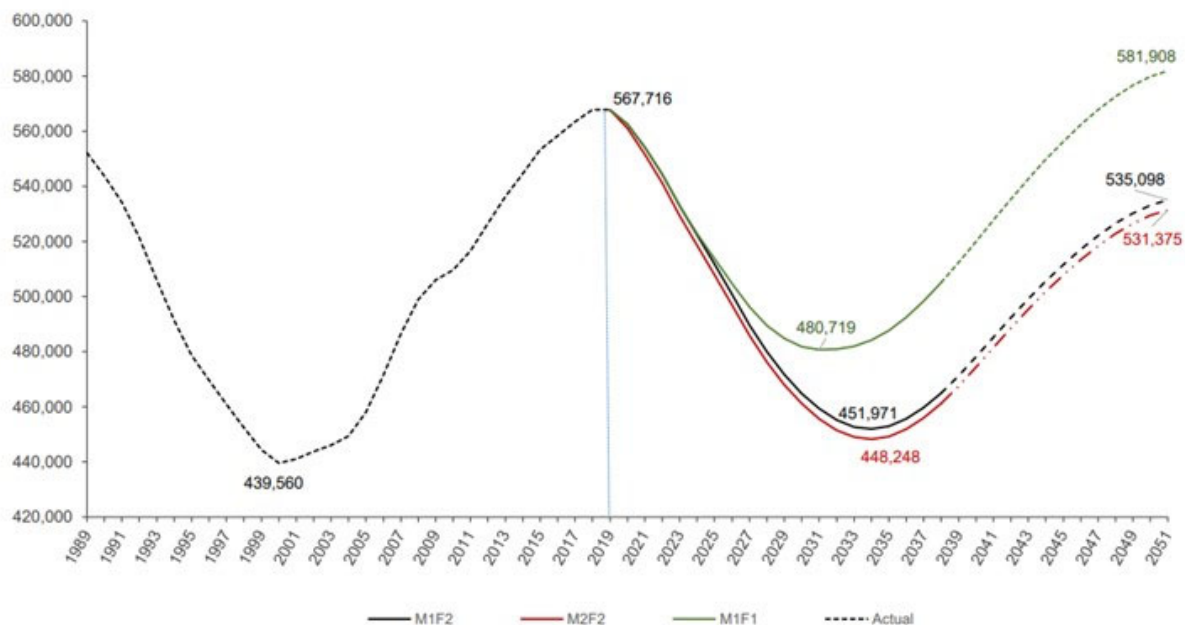
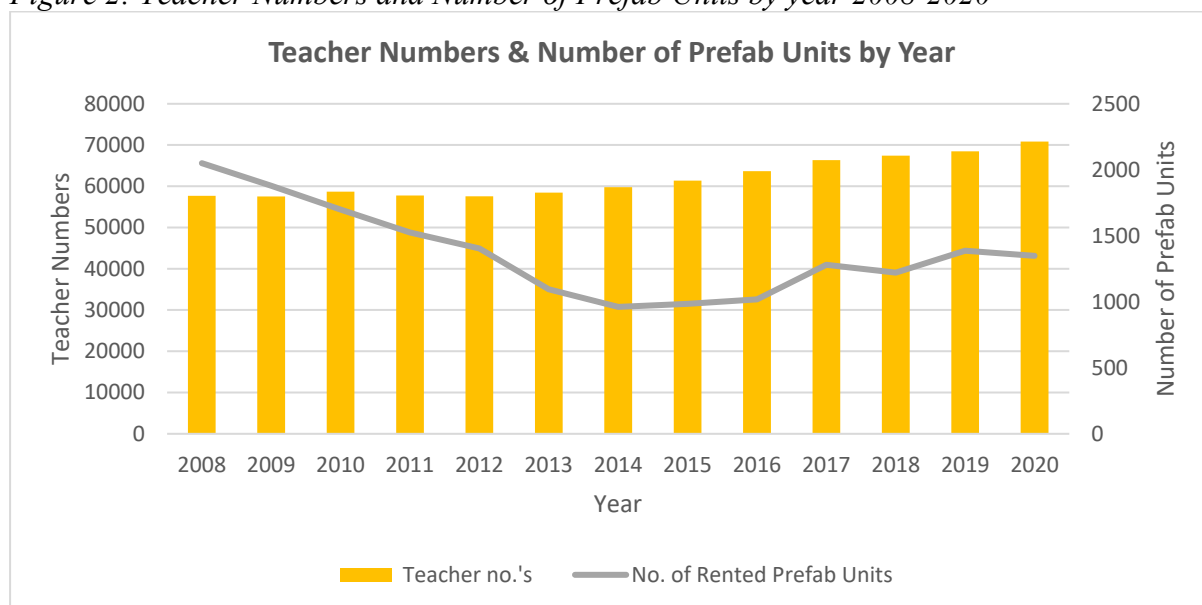
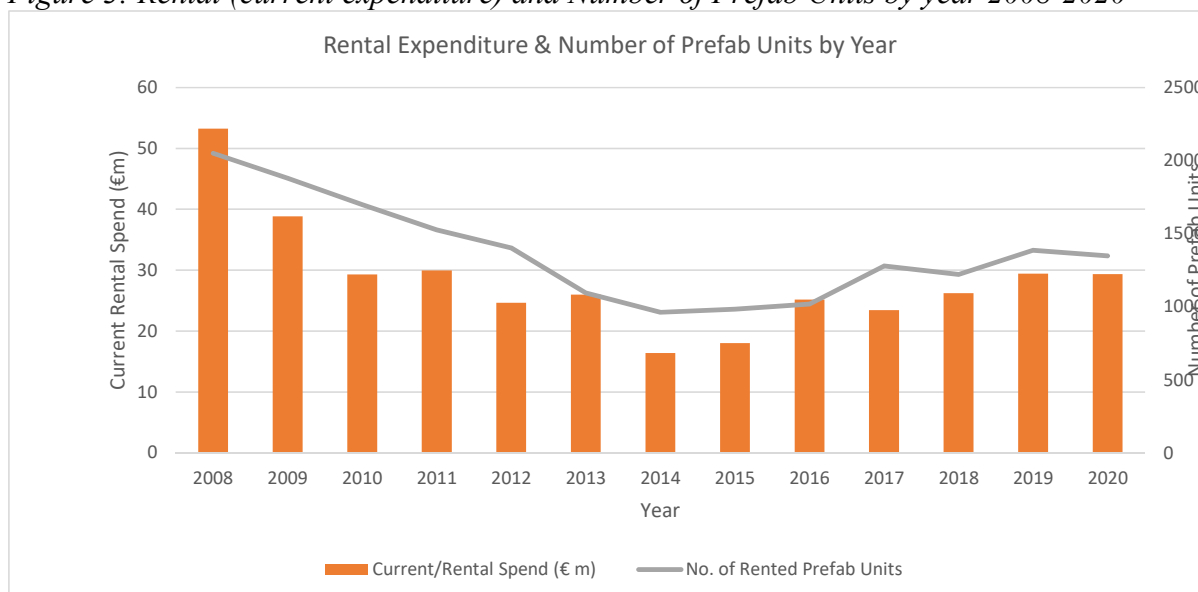


Figure 2: Teacher Numbers and Number of Prefab Units by year 2008-2020



¹. In 2007, the Department recognised the limitations of the FMS to monitor rental expenditure and so a project was implemented to restructure the Chart of Accounts and gain efficiencies from the system. This enabled the development of more robust reports designed to meet our reporting needs. The Chart of Accounts was further revised in 2020 to allow for even more comprehensive reporting at school roll number level.

Figure 3: Rental (current expenditure) and Number of Prefab Units by year 2008-2020



**Please note that one prefab unit may consist of one or more classrooms*

****Expenditure is in respect of all temporary accommodation rentals (prefabs, rented buildings and land)**

Generally, temporary accommodation is in put in place:

- pending the provision of a permanent building for a school, where a major project has been approved for a school and the project is progressing through the architectural planning processes;
- Where a school requires temporary accommodation for decant purposes while it is awaiting the completion of construction of a permanent building.
- Where a school may need accommodation at very short notice for example when an additional teacher has been appointed and where it would not be possible to provide permanent accommodation immediately due to the design, statutory processes and procurement stages involved.
- Where a new school is established, with such schools generally starting in temporary accommodation pending the completion of the permanent school building.

Factors Affecting the Use of Temporary Accommodation

- Rapidly growing enrolments at primary level - increased from 439,560 in 2000 to 567,772 in 2018.
- Since 2011, 49 new primary schools and 46 new post-primary schools have been established to cater for demographic growth. Additionally, a new special school was established in 2019 to meet special educational requirements in north-west Dublin.
- There have been an additional 13,200 teachers (primary and post-primary) since 2008.

The focus of this response is in relation to the cost of rented prefabs given the ongoing rental costs.

Since 2008, expenditure under the Department's rental budget has averaged at 5.5% of capital expenditure during this 13 year period. It peaked at over 8% in 2008. In 2020 it amounted to 3.7%.

The reduction and stabilisation of expenditure under the rental budget since the peak of 2008 has been achieved in a period of very large growth in teacher numbers of 13,200 and in pupil numbers of 98,940 (across both primary and post-primary sectors).

The capital costs associated with the delivery of prefabricated accommodation is not reflected in this response as these costs vary from site to site and is influenced by items such as site condition and planning permission conditions.

Local authorities look at the entire school site when they receive a planning application for any school accommodation (prefab or permanent) with enabling work items such as the provision of services, sewerage, car parking and bus set-down areas sometimes resulting in additional works being required that are not directly associated with the installation cost of the prefab but are triggered by the installation of the prefab. These works would also be required if there was a permanent solution being provided. Therefore, the works involved may have a longer term strategic value. In this regard, it is not possible to give a breakdown of cost directly associated with the installation of a prefab versus other costs.

Notwithstanding the increase in teacher and pupil numbers, the use of the rental budget has been managed and reduced by the very significant investment in permanent accommodation solutions under the school building programme:

- For example, circa. 25% of classrooms at primary level have been newly constructed or refurbished since 2008. The equivalent figure at post-primary level is 20%.
- During the period 2018-2020, under the NDP, there were 521 building projects completed under the Large-Scale Capital Programme and the Additional Accommodation Scheme.

The introduction of the Additional Accommodation Scheme in 2008 has proved very effective in enabling schools to put permanent accommodation solutions in place and therefore reduce use of temporary accommodation. The current downward trend in enrolments at primary level is further reducing this use.

Current position in relation to the replacement of long-term rented temporary accommodation

The Department is taking an integrated approach with the prefab replacement through the replacement of prefabs as part of all large-scaled projects. In addition since mid-2018 all schools approved for additional accommodation under the Department's Additional Accommodation Scheme are also having necessary prefabs replaced as part of their additional accommodation project. This integrated approach helps to streamline the delivery of projects for schools

Number of prefab units approved for replacement with permanent buildings under the Department's Additional Accommodation Scheme since mid-2018.

Year	No. of prefabs units.
2018	96
2019	221
2020	164

In addition prefabs are routinely replaced also in schools as part of major building projects under the Department's Major Capital Programme

Investment under the NDP has positioned the Department to continue to catch up on a legacy of under investment. The focus over the last decade has primarily on adding capacity to cater for increased enrolments.

There are currently in excess of 200 projects currently at construction, most of which will be completed in 2021. It is anticipated that circa 140 projects will progress to construction during the first half of 2021. The progression and completion of these projects will make further inroads on the replacement of temporary prefabricated accommodation with knock-on savings on the rental budget.

Following on from our most recent national demographic analysis, the Department will be using this information to undertake a case by case assessment of the long-term accommodation requirements for each of the 396 schools that currently have rented prefabricated accommodation. This case by case assessment will be undertaken and completed in 2021. We will update the committee of the outcome of this process.

Many of these schools are part of the pipeline of projects under the school building programme. The Department will seek to ensure that opportunities for maximising VFM opportunities are achieved with the delivery of permanent accommodation solutions as part of the rollout of the NDP.

Details in tabular format of all schools currently renting temporary structures, the duration they have been used and the rental cost associated with them from 2008-2020 are set out tables included in Appendix 1.

Item 3. Payroll System

An information note on the payroll system including timescale for completion.

The Department operates an integrated suite of ICT applications to deliver payroll services to over 3,700 schools and in the region of 130,000 payees each fortnight. In particular, the Department's Online Claim System is used by all schools to submit a significant number of claims for processing for each payroll run.

The Department has two significant payroll related projects underway at present. The first is an upgrade to the existing payroll software and related infrastructure to keep the application on supported software and to ensure we can apply any necessary software updates arising from budgetary changes etc. We have four payrolls and one has already been upgraded in November 2020 and the plan is to have the remaining three payrolls upgraded by the end of 2021. We are also working on upgrading elements of the bespoke software applications in place in order to keep that on supported software.

The Department is assessing the feasibility of implementing some self-service functionality, specifically online payslips and this work will be progressed during 2021.

The second project involves the procurement of a long term replacement software solution for Human Capital Management and Payroll. A business case for this project has been approved and procurement documentation is at an advanced stage of drafting. This is a very significant project and a Request for Information issued to the market in late 2019. There has been ongoing engagement with product vendors and system implementation companies to understand the different market offerings. Market engagement through the RFI process is due to be completed in February 2021. The Department is working with the Office of Government Procurement and the Chief State Solicitor's Office on the preparation of the procurement documentation and the current plan is to issue a PQQ and Request for Tender to the market by end Q3 2021. The timeline is being kept under review in the context of the impact of Covid restrictions. As previously outlined, procurement can take in the region of 12 months from the time the competition is put out in the market and a contract is signed although in some cases it can take longer. Once a contract is signed, and the project is mobilised, it is estimated that it will take 2-3 years to design, build, test and implement a new solution.

The Department will keep the Committee apprised of timelines and progress on the roll out of the upgrade project and the procurement project on an annual basis.

Item 4: Home Tuition Scheme

Information regarding the operation of the home tuition scheme, including details of the contractual relationship between tutors and the Department and if tutors are among 9,000 casual employees on the payroll

Under the Home Tuition Schemes, Home Tutors are engaged by the parents/guardian of the child who is to receive tuition. Home tutors do not have a contractual relationship with the Department of Education.

In accordance with instructions from the Revenue Commissioners, payments under the Home Tuition Grant Scheme are subject to statutory deductions at source. In order to facilitate parents, the Department acts solely as payroll agents on behalf of the parents/guardian. These tutors are therefore not classed as casual employees of the Department on the payroll.

Item 5. Compensation payments

Further details regarding information provided in respect of average compensation payments

The compensation awarded and legal costs paid and awarded in a given year are presented in the annual Appropriation Accounts in accordance with the prescribed format set centrally by the Department of Public Expenditure and Reform.

In order to provide the Committee with details in respect of average compensation payments, where compensation was paid arising from a legal case, the Department, partly informed by data provided by the State Claims Agency, is conducting a review exercise of all such cases that were reported in the 2019 Appropriation Accounts and were closed as of the end of 2019. This is to establish the cumulative compensation and legal costs related to these cases, which may have been paid over more than one accounting period and thus provide average compensation payment amounts for cases closed in 2019. The result of this review will be provided to the Committee as soon as it is completed.

Item 6: Fraud

An update regarding information provided on page 7 of your letter in relation to an investigation of suspected fraud within the Department that is completed with no decision made whether to report the matter to An Garda Síochána.

My correspondence dated 13th November 2020 (Ref: S00050 PAC33) referred to a case of suspected fraud that was discovered prior to the certification of the 2019 Appropriation Accounts by the C&AG.

As of 13th November, a value of €1,500 had been identified. I can now confirm that the Department recouped €1,500 from the individual involved. The case has not been classed as a fraud and this matter is now considered closed.

Appendix 1

Details in tabular format of all schools currently renting temporary structures, the duration they have been used and the rental cost associated with them from 2008-2020 as set out in the Tables 1: Breakdown by duration and associated costs, Table 2: Breakdown by County and associated rental costs and Table 3: Breakdown by school and associated cost (including year rental commenced).

Table 1 – Breakdown by duration and associated rental costs of all school currently renting temporary structures

No. Years in Duration	No. Schools Listed	Total Spend 2008-2020*.
15 + Years	57	36,562,510
10-14 Years	43	21,035,922
5-9 Years	101	32,131,568
0-4 Years	195	18,498,281
Total	396	108,228,282

Table 2: Breakdown by County and associated rental costs of all school currently renting temporary structures

County	No. Schools Listed	Total Spend 2008-2020*
Carlow	8	1,713,330
Cavan	11	1,675,611
Clare	12	6,588,423
Cork	53	17,194,295
Donegal	12	4,115,925
Dublin	81	23,146,388
Galway	22	4,375,711
Kerry	11	1,623,803
Kildare	22	7,925,286
Kilkenny	10	964,215
Laois	7	1,933,666
Leitrim	2	83,452
Limerick	12	2,775,534
Longford	8	510,932
Louth	12	4,725,041
Mayo	10	1,341,868
Meath	22	7,726,262
Monaghan	7	488,250
Offaly	6	2,243,626
Roscommon	5	663,137
Sligo	10	1,697,493
Tipperary	20	4,660,648
Waterford	9	1,327,780
Westmeath	5	644,167
Wexford	3	3,233,143
Wicklow	16	4,850,297
Grand Total	396	108,228,282

Table 3: Breakdown by school and associated rental costs of all school currently renting temporary structures

Line No.	County	School Name	Roll Number	School Level	Year Rental Commenced	Total Spend 2008-2020*
1	Carlow	PRESENTATION/DE LA SALLE CARLOW, MHUINE BHEAG	61150N	Post Primary School	2016	363,761
2	Carlow	BALLYCONNELL N S	00977B	Primary	2017	44,175
3	Carlow	FR CULLEN MEMORIAL N S	16938E	Primary	2017	77,509
4	Carlow	SAPLINGS CARLOW SPECIAL SCHOOL	20370V	Special School	2017	998,729
5	Carlow	ST MARYS ACADEMY, STATION ROAD	61120E	Post Primary School	2018	62,676
6	Carlow	BORRIS VS	70400L	Post Primary School	2018	41,267
7	Carlow	ST LASERIAN'S MXD NS	19784S	Primary	2019	82,164
8	Carlow	ST FIACC'S NS	19958C	Primary	2019	43,050
9	Cavan	S N CORRABHA	16959M	Primary	2001	35,302
10	Cavan	CONVENT OF MERCY N S	16057S	Primary	2007	366,216
11	Cavan	SCOIL NAOMH BRID	17230L	Primary	2016	187,980
12	Cavan	ST PATRICKS NS	19871N	Primary	2016	57,101
13	Cavan	ST BRICKINS BELTURBET	70350W	Post Primary School	2016	72,077
14	Cavan	ST CLARES PRIMARY SCHOOL	08490N	Primary	2017	526,308
15	Cavan	KILL NS	19285A	Primary	2017	51,168
16	Cavan	ST CLARES NS	19983B	Primary	2017	114,908
17	Cavan	BAILIEBORO NS	18059J	Primary	2018	184,044
18	Cavan	VIRGINIA MXD N S	16083T	Primary	2019	37,150
19	Cavan	BALLYCONNELL MXD N S	16093W	Primary	2019	43,358
20	Clare	GAELSCOIL DONNACHA RUA	19849U	Primary	2002	807,252
21	Clare	KNOCKANEAN NS	17583V	Primary	2005	447,840
22	Clare	SIXMILEBRIDGE N S	16908S	Primary	2006	1,246,848
23	Clare	SCOIL MHAINCHIN ENNISTYMON	20245S	Primary	2007	591,877
24	Clare	ENNISTYNOM VS	70840Q	Post Primary School	2007	127,920
25	Clare	ENNIS EDUCATE TOGETHER	20086B	Primary	2008	1,772,490
26	Clare	MOL AN OIGE PRIMARY SCHOOL	20313J	Primary	2008	1,121,564
27	Clare	CBS ENNISTYMON	61940T	Post Primary School	2015	225,139
28	Clare	SCARIFF COMMUNITY CLOOEGE	70900I	Post Primary School	2015	81,770
29	Clare	KILKISHEN N S	13870E	Primary	2016	24,943
30	Clare	GAELSCOIL MHICIL CIOGOG	19838P	Primary	2017	119,162
31	Clare	LISSYCASEY NS	18555V	Primary	2019	21,618
32	Cork	CAHERAGH NS	19557H	Primary	2000	35,271
33	Cork	SCHOOL OF THE DIVINE CHILD	18483W	Special School	2001	239,093
34	Cork	RINGASKIDDY	20049S	Primary	2001	327,358
35	Cork	CLOGHROE MIXED N S	07242M	Primary	2005	517,394
36	Cork	SCOIL PADRE PIO NS	18217B	Primary	2005	947,549
37	Cork	GAELSCOIL CARRIG UÍ LEIGHIN	19881Q	Primary	2005	1,640,944

38	Cork	BALLINTOTAS N S	15165Q	Primary	2007	384,247
39	Cork	COOMHOLA N S	15646J	Primary	2007	78,321
40	Cork	Scoil Chlochair Mhuire National School	17103E	Primary	2007	522,029
41	Cork	NAOMH MHUIRE B	18000W	Primary	2007	1,311,390
42	Cork	SCOIL MHUIRE	18128C	Primary	2007	225,282
43	Cork	RATHMORE NS	19381T	Primary	2007	135,147
44	Cork	DRIMOLEAGUE NS	19801P	Primary	2007	200,089
45	Cork	GAELSCOIL CHIONN TSAILE	20265B	Primary	2007	1,214,276
46	Cork	Sacred Heart Secondary School	62170B	Post Primary School	2007	464,661
47	Cork	ST FRANCIS CAPUCHIN COLLEGE, ROCHESTOWN	62460K	Post Primary School	2007	460,512
48	Cork	ST PATRICK'S GIRLS SCHOOL, GARDINERS HILL	62730N	Post Primary School	2007	184,871
49	Cork	SHANBALLY N S	13889C	Primary	2011	514,072
50	Cork	S N CHOBH CHIONN TSAILE	18829J	Primary	2012	105,199
51	Cork	SCOIL MHUIRE GAN SMAL	62090D	Post Primary School	2012	1,183,688
52	Cork	SCOIL MUIRE NA NGRAST	19672H	Primary	2013	90,620
53	Cork	DOUGLAS ROCHESTOWN EDUCATE TOGETHER NS	20413N	Primary	2013	902,693
54	Cork	KILBRITTAIN MIXED N S	14116V	Primary	2014	177,169
55	Cork	SCOIL NA MBRAITHRE BOYS SNR SCH	16681Q	Primary	2015	379,854
56	Cork	DAVIS COLLEGE MALLOW	71020G	Post Primary School	2015	339,421
57	Cork	MIDDLETON V S ST COLMANS GAELCHOLAISTE CHARRIG UI LEIGHIN	71050P	Post Primary School	2015	202,249
58	Cork	76273O		Post Primary School	2015	283,482
59	Cork	CLOYNE NATIONAL SCHOOL	02452V	Primary	2016	175,685
60	Cork	ST. JOHNS GIRLS N S	18535P	Primary	2016	960,236
61	Cork	SCOIL CHLIODHNA COMMUNITY NS	20442U	Primary	2016	267,999
62	Cork	SCOIL MHUIRE LOURDES	13512B	Primary	2017	800,484
63	Cork	MUIRE GAN SMAL C	17105I	Primary	2017	35,584
64	Cork	ST MICHAELS SCH	18388F	Primary	2017	61,402
65	Cork	CARRIGALINE EDUCATE TOGETHER NS	20310D	Primary	2017	102,139
66	Cork	PATRICIAN ACADEMY	62330U	Post Primary School	2017	644,444
67	Cork	VICARSTOWN MIXED N S	06342L	Primary	2018	79,458
68	Cork	KANTURK B N S	14052V	Primary	2018	102,498
69	Cork	UPPER GLANMIRE N S	15792U	Primary	2018	30,214
70	Cork	SN GLEANNAMHAIN	18196T	Primary	2018	38,376
71	Cork	NEWCESTOWN NS	19348V	Primary	2018	45,572
72	Cork	SCOIL AN ATHAR TADHG	19415K	Primary	2018	5,117
73	Cork	GAELSCOIL AN CHAISLEAIN	20500I	Primary	2018	198,545
74	Cork	NAGLE RICE	62210K	Post Primary School	2018	50,602
75	Cork	ST MARY'S SECONDARY SCHOOL, CONVENT OF MERCY MALLOW	62350D	Post Primary School	2018	144,648
76	Cork	ST BROGANS COLLEGE, BANDON	70910L	Post Primary School	2018	55,350
77	Cork	BEARA COMMUNITY SCHOOL	91387Q	Post Primary School	2018	52,073
78	Cork	LARAGH N S	05477G	Primary	2019	22,066

79	Cork	BALLINTEMPLE N S	15781P	Primary	2019	38,192
80	Cork	SCOIL BERNADETTE SPECIAL SCHOOL	18458A	Special School	2019	24,144
81	Cork	GAELSCOIL DROICHEAD NA BANNDAN	20025E	Primary	2019	19,373
82	Cork	SCOIL CHUIL AODHA BARR D INSE	20222G	Primary	2019	-
83	Cork	ARDSCOIL UI URMOLTAIGH	62050O	Post Primary School	2019	95,096
84	Cork	CARRIGTWOHILL POST PRIMARY SCHOOL	76333G	Post Primary School	2019	78,120
85	Donegal	SCOIL NAOMH FIACHRA	12077E	Primary	2006	771,559
86	Donegal	SCOIL CHOILMCILLE	18625Q	Primary	2006	316,528
87	Donegal	LITTLE ANGLES SPEC SCH	19724A	Special School	2007	848,788
88	Donegal	ST EUNANS COLLEGE, LETTERKENNY	62830R	Post Primary School	2010	272,920
89	Donegal	GLENSWILLY N S	19313C	Primary	2014	229,767
90	Donegal	SCOIL IOSAGAIN	19967D	Primary	2016	1,499,010
91	Donegal	MOVILLE COMMUNITY COLLEGE	76084L	Post Primary School	2016	70,097
92	Donegal	ROBERSTONS NS	18731P	Primary	2018	27,804
93	Donegal	SCOIL MHUIRE	18371L	Primary	2019	11,670
94	Donegal	CRANA COLLEGE	71140Q	Post Primary School	2019	16,826
95	Donegal	ABBEY V S	71180F	Post Primary School	2019	28,782
96	Donegal	LORETO C S MILFORD	91500J	Post Primary School	2019	22,173
97	Dublin	ST JOHN BOSCO SENIOR BOYS SCHOOL	17912O	Primary	2001	562,296
98	Dublin	RUSH NS	19660A	Primary	2001	891,167
99	Dublin	ST MARY'S JS	19605P	Primary	2002	77,966
100	Dublin	BRACKENSTOWN NS	19535U	Primary	2005	1,212,005
101	Dublin	CENTRAL INFS SCHOOL	01795A	Primary	2006	193,694
102	Dublin	GOLDENBRIDGE CONVENT	07546J	Primary	2006	1,152,290
103	Dublin	S N EOIN BOSCO NAI BUAC	18632N	Primary	2006	146,525
104	Dublin	ST MICHAELS HOUSE NS	19757P	Special School	2006	515,188
105	Dublin	MUSLIM NS	19949B	Primary	2006	255,045
106	Dublin	GAELSCOIL CHNOC LIAMHNA	20043G	Primary	2006	46,953
107	Dublin	Holy Well National School	20550A	Primary	2006	1,760,720
108	Dublin	BALBRIGGAN C C	70010V	Post Primary School	2006	151,106
109	Dublin	CENTRAL SENIOR MXD N S	00752A	Primary	2007	259,721
110	Dublin	S N MUIRE GAN SMAL B	17083B	Primary	2007	44,748
111	Dublin	BAILE FALBACH	17472M	Primary	2007	164,633
112	Dublin	ST MARYS HOSPITAL & RESIDENTIAL SCHOOL	18210K	Special School	2007	1,339,145
113	Dublin	ST MICHAELS HSE SPEC SC	18763F	Special School	2007	599,856
114	Dublin	ST FRANCIS X SENIOR SCHOOL	19470S	Primary	2007	217,681
115	Dublin	CHEEVERSTOWN SPECIAL SCHOOL	20053J	Special School	2007	162,260
116	Dublin	ST MICHAELS PRIMARY SCHOOL	19662E	Primary	2008	154,539
117	Dublin	GAEL SCOIL ROS EO	20334R	Primary	2008	992,036
118	Dublin	NORTH DUBLIN MUSLIM NS	20152L	Primary	2011	1,367,693
119	Dublin	ST MAELRUANS JUNIOR NS	19462T	Primary	2012	159,793
120	Dublin	ROSMINI COMMUNITY SCHOOL, DROMCONDRA	91344V	Post Primary School	2013	1,642,735

121	Dublin	ST CATHERINES WEST N S	15625B	Primary	2014	107,134
122	Dublin	ST VINCENTS CONVENT INF N S	16754R	Primary	2014	70,996
123	Dublin	ST THOMAS JUNIOR NS ESKER	19542R	Primary	2014	105,636
124	Dublin	LUCAN V S	70080T	Post Primary School	2014	804,036
125	Dublin	Hartstown Community School	91339F	Post Primary School	2014	52,554
126	Dublin	NAOMH MAOLRUAIN SNR	19463V	Primary	2015	219,842
127	Dublin	SN CHRONAIN	19503H	Primary	2015	261,941
128	Dublin	SCOIL PHADRAIG	20056P	Primary	2015	505,222
129	Dublin	RUSH AND LUSK EDUCATE TOGETHER NS	20176C	Primary	2015	132,775
130	Dublin	FINGAL COMMUNITY COLLEGE	70121H	Post Primary School	2015	252,642
131	Dublin	SCOIL MHUIRE NS	18080A	Primary	2016	167,485
132	Dublin	MARY QUEEN OF ANGELS 1 NS	18585H	Primary	2016	63,653
133	Dublin	S N AENGHUSA	19576L	Primary	2016	77,814
134	Dublin	Scoil Mochua	19590F	Special School	2016	8,500
135	Dublin	ST MARYS CENTRAL N S	19727G	Primary	2016	221,414
136	Dublin	GAELSCOIL CLUAIN DOLCAIN	19855P	Primary	2016	399,060
137	Dublin	HOLY FAMILY SENIOR NS	19877C	Primary	2016	173,848
138	Dublin	GAELSCOIL NA CAMOIGE	19991A	Primary	2016	110,864
139	Dublin	ST JOSEPHS SECONDARY SCHOOL RUSH	60343T	Post Primary School	2016	181,342
140	Dublin	ST FINTANS HIGH SCHOOL, SUTTON	60370W	Post Primary School	2016	100,417
141	Dublin	Gaelcholaiste an Phiarsaigh	68161H	Post Primary School	2016	465,735
142	Dublin	COLAISTE COIS LIFE	76065H	Post Primary School	2016	693,781
143	Dublin	Lusk Community College	76213T	Post Primary School	2016	547,177
144	Dublin	ST BRIGIDS PRIMARY SCHOOL	16786H	Primary	2017	14,136
145	Dublin	BLESSED OLIVER N S	17569E	Primary	2017	549,627
146	Dublin	SCOIL NAISIUNTA NAOMH FEARGAL	18137D	Primary	2017	156,751
147	Dublin	ST JOSEPHS FOR THE BLIND NS	18417J	Special School	2017	86,986
148	Dublin	ST CANICES GNS	18683H	Primary	2017	205,205
149	Dublin	SCOIL AINE NAOFA	19676P	Primary	2017	357,361
150	Dublin	SCOIL TREASA	19933J	Primary	2017	12,776
151	Dublin	HOLY SPIRIT JUNIOR PRIMARY SCHOOL	20463F	Primary	2017	141,330
152	Dublin	DOMINICAN COLLEGE, DRUMCONDRA	60690R	Post Primary School	2017	58,737
153	Dublin	HOLY FAMILY COMMUNITY SCHOOL, KILTEEL ROAD	91301D	Post Primary School	2017	69,077
154	Dublin	ST MOLAGA SENIOR NS	16970A	Primary	2018	58,548
155	Dublin	SCOIL NAOMH PADARIG	19114T	Primary	2018	13,000
156	Dublin	ST JOHNS NS BALLYBRACK	19960M	Primary	2018	16,531
157	Dublin	OUR LADY OF MERCY DRIMNAGH	60991I	Post Primary School	2018	31,197
158	Dublin	SKERRIES COMMUNITY COLLEGE	76078Q	Post Primary School	2018	29,953
159	Dublin	COLAISTE LAN GAEILGE AN GHRAINSEACH	76085N	Post Primary School	2018	133,930
160	Dublin	CLONTURK COMMUNITY COLLEGE	76394D	Post Primary School	2018	138,154
161	Dublin	BALLYROAN B N S	03359N	Primary	2019	-

162	Dublin	BANTIARNA NA MBUANNA G	18911R	Primary	2019	11,033
163	Dublin	ST VINCENTS HOME NS	19039I	Special School	2019	-
164	Dublin	BALALLY GIRL'S NS	19319O	Primary	2019	67,502
165	Dublin	SCOIL AN TSEACHTAR LAOCH	19430G	Primary	2019	-
166	Dublin	DUBLIN 7 EDUCATE TOGETHER	20131D	Primary	2019	47,170
167	Dublin	GAELSCOIL UI HEARCAIN	20220C	Primary	2019	56,826
168	Dublin	PELLETSTOWN ASHTOWN EDUCATE TOGETHER NS	20392I	Primary	2019	245,539
169	Dublin	Dublin South City Educate Together National School	20501K	Primary	2019	78,705
170	Dublin	DONAGHMEDE HOWTH D13 NS	20519G	Primary	2019	106,261
171	Dublin	D6 CLONSKEAGH D6W NS	20520O	Primary	2019	49,682
172	Dublin	KILLESTER RAHENY CLONTARF NS	20525B	Primary	2019	71,545
173	Dublin	DUBLIN SOUTH CITY ET SECONDARY SCHOOL	68305F	Post Primary School	2019	140,126
174	Dublin	DUBLIN NORTH EAST EDUCATE TOGETHER SECONDARY SCHOOL	68346T	Post Primary School	2019	128,707
175	Dublin	SWORDS POST PRIMARY	76475D	Post Primary School	2019	258,994
176	Dublin	Riverview Educate Together National School	20494Q	Primary	2020	-
177	Dublin	SWORDS SOUTH NS	20528H	Primary	2020	17,341
178	Galway	ROSEDALE SCHOOL	20070J	Special School	2000	1,393,013
179	Galway	S N LEITIRGEIS	09833W	Primary	2001	33,948
180	Galway	SCOIL NAOMH EANNA	18112K	Primary	2005	503,102
181	Galway	GORT NATIONAL SCHOOL	20465J	Primary	2005	171,080
182	Galway	S N CREACHMHAOIL	05754G	Primary	2006	530,837
183	Galway	SCOIL CHROI NAOFA	16071M	Primary	2014	119,668
184	Galway	S N SEOSAMH NAOFA	17444H	Primary	2014	215,255
185	Galway	TUAM VOCATIONAL SCHOOL	71390Q	Post Primary School	2014	235,432
186	Galway	ST OLIVERS CHILD EDUCATION AND DEVELOPMENT CENTRE	20330J	Special School	2015	65,816
187	Galway	TUAM PARISH PRIMARY SCHOOL	20547L	Primary	2015	14,711
188	Galway	COLAISTE CHOLMCILLE	71250A	Post Primary School	2015	215,938
189	Galway	SCOIL MHUIRE	19973V	Primary	2016	110,021
190	Galway	SEAMOUNT COLLEGE, KINVARA	63050T	Post Primary School	2016	252,617
191	Galway	BRIERFIELD N SCHOOL	14294W	Primary	2017	41,709
192	Galway	LAKE VIEW SCHOOL RENMORE	19201O	Special School	2017	13,751
193	Galway	MHIC DARA	19932H	Primary	2017	62,361
194	Galway	S N FHURSA	16937C	Primary	2018	30,893
195	Galway	MOYCULLEN CENTRAL SCHOOL	19529C	Primary	2018	38,573
196	Galway	NEWTOWN NATIONAL SCHOOL	20280U	Primary	2018	70,356
197	Galway	GORT COMMUNITY SCHOOL	91498C	Post Primary School	2018	197,232
198	Galway	BALLINDERRY N S	16410I	Primary	2019	29,353
199	Galway	GALWAY STEINER NATIONAL SCHOOL	20462D	Primary	2019	30,044
200	Kerry	GAELSCOIL LIOS TUATHAIL	20013U	Primary	2004	145,165
201	Kerry	SN CEANN TRA MEASCAITHE	15592M	Primary	2006	55,114
202	Kerry	KILGOBNET N S	07841L	Primary	2007	64,707
203	Kerry	ST OLIVERS NS	19512I	Primary	2014	663,253

204	Kerry	Scoil Chorp Chríost	10775S	Primary	2016	12,608
205	Kerry	ST BRIGID'S, KILLARNEY	61340S	Post Primary School	2017	584,988
206	Kerry	SCOIL NAOMH ERC	18590A	Primary	2018	40,295
207	Kerry	GAELSCOIL MHIC EASMAONN	19631Q	Primary	2018	33,739
208	Kerry	NAGLE RICE PRIMARY SCHOOL	20229U	Primary	2019	-
209	Kerry	LISTOWEL COMMUNITY COLLEGE	70500P	Post Primary School	2019	15,546
210	Kerry	CAUSEWAY C C, TRALEE	70540E	Post Primary School	2020	8,389
211	Kildare	SCOIL MHICIL NAOFA	18288B	Primary	2001	2,412,078
212	Kildare	ST JOSEPHS NS	16706G	Primary	2006	983,993
213	Kildare	SCOIL CHORBAIN	17254C	Primary	2006	468,076
214	Kildare	ST PATRICKS BNS	19796C	Primary	2006	553,357
215	Kildare	ST RAPHAELS NS	18988G	Special School	2007	431,748
216	Kildare	ST FARNANS POST PRIMARY SCHOOL, PROSPEROUS	70720G	Post Primary School	2013	227,937
217	Kildare	ALMHAINÉ N S	17567A	Primary	2014	60,762
218	Kildare	RATHCOFFEY N S	16845U	Primary	2015	40,934
219	Kildare	ST MARKS SPECIAL SCH	19455W	Special School	2015	278,283
220	Kildare	PATRICIAN SECONDARY SCHOOL, NEWBRIDGE	61681V	Post Primary School	2015	150,526
221	Kildare	ST PAUL'S MONASTEREVIN	61702D	Post Primary School	2015	604,281
222	Kildare	MONASTEREVAN CONVENT	15769C	Primary	2017	60,501
223	Kildare	MAYNOOTH B N S	17341U	Primary	2017	101,485
224	Kildare	CROSS AND PASSION COLLEGE, KILCULLEN	61690W	Post Primary School	2017	243,706
225	Kildare	ST CONLETHS INFANT PRIMARY SCHOOL	17873H	Primary	2018	70,627
226	Kildare	COLAISTE NAOMH MHUIRE, NAAS	61730I	Post Primary School	2018	134,170
227	Kildare	ATHY COMMUNITY COLLEGE	70650L	Post Primary School	2018	78,228
228	Kildare	NAAS COMMUNITY COLLEGE	76194S	Post Primary School	2018	706,360
229	Kildare	CELBRIDGE COMMUNITY SCHOOL	91614B	Post Primary School	2018	226,921
230	Kildare	LEIXLIP NS	20526D	Primary	2019	56,875
231	Kildare	GAELCHOLAISTE MHAIGH NUAD	76554W	Post Primary School	2019	34,440
232	Kildare	MAYNOOTH EDUCATE TOGETHER NATIONAL SCHOOL	20292E	Primary	2020	-
233	Kilkenny	ST CANICES CO ED.	19626A	Primary	2006	424,602
234	Kilkenny	PRESENTATION SS	61590S	Post Primary School	2015	113,622
235	Kilkenny	COLAISTE MHUIRE JOHNSTOWN VS	70600T	Post Primary School	2016	123,341
236	Kilkenny	KILKENNY MIXED N S	17218V	Primary	2017	73,840
237	Kilkenny	S N BAILE AN PHIULL	17357M	Primary	2018	40,883
238	Kilkenny	URLINGFORD NS	19930D	Primary	2018	17,564
239	Kilkenny	COLAISTE POBAIL OSRAI	70641K	Post Primary School	2018	132,161
240	Kilkenny	COLAISTE AIREAGAIL BALLYHALE	70570N	Post Primary School	2019	15,350
241	Kilkenny	SCOIL NAOMH IOSEPH	18607O	Primary	2020	8,567
242	Kilkenny	Scoil Mhuire	20492M	Primary	2020	14,284
243	Laois	GS AN tSLÍ Dála	20224K	Primary	2005	329,622
244	Laois	TRUMMERA N S	15446B	Primary	2007	186,133
245	Laois	COLAISTE IOSAGAIN, PORTARLINGTON	68068R	Post Primary School	2012	1,185,851

246	Laois	MOUNTMELICK BOYS N S	16070K	Primary	2018	159,300
247	Laois	KOLBE CENTRE	20100P	Special School	2018	33,382
248	Laois	ST FINTANS N S	07636K	Primary	2019	20,723
249	Laois	BARNASHRONE NATIONAL SCHOOL	18294T	Primary	2019	18,655
250	Leitrim	SCOIL MHUIRE	20432R	Primary	2017	76,663
251	Leitrim	CARRIGALLEN N S	16474L	Primary	2020	6,788
252	Limerick	ST ANNE'S NS	18177P	Primary	2000	352,895
253	Limerick	ST BRIGIDS NS	19475F	Primary	2006	181,310
254	Limerick	SCOIL NAOMH IOSAF	16712B	Primary	2007	150,755
255	Limerick	MONALEEN NATIONAL SCHOOL	17937H	Primary	2007	1,050,348
256	Limerick	COLAISTE CHIARAIN CROOM	71840V	Post Primary School	2014	200,966
257	Limerick	QUEEN OF THE PEACE NS	17737W	Primary	2015	29,947
258	Limerick	JOHN THE BAPTIST COMMUNITY SCHOOL	91502N	Post Primary School	2016	75,473
259	Limerick	MUNGRET COLLEGE	76476F	Post Primary School	2017	553,544
260	Limerick	MILFORD NATIONAL SCHOOL	19800N	Primary	2018	43,161
261	Limerick	SCOIL POL KILFINANE	64130W	Post Primary School	2018	75,491
262	Limerick	KILCORNAN NS	17871D	Primary	2019	19,630
263	Limerick	ST. VINCENTS SPECIAL SCHOOL	19200M	Special School	2019	42,017
264	Longford	BALLYMAHON VOCATIONAL SCHOOL	71690F	Post Primary School	2015	101,998
265	Longford	ST CHRISTOPHERS SPECIAL SCHOOL	19429V	Special School	2016	82,674
266	Longford	CONVENT OF MERCY BALLYMAHON	63710M	Post Primary School	2016	39,423
267	Longford	ST EMERS	19753H	Primary	2017	94,710
268	Longford	SCOIL MHUIRE NS	19987J	Primary	2017	58,630
269	Longford	ST MATTHEW'S MIXED NS	20128O	Primary	2017	58,720
270	Longford	GS AN LONGFOIRT	20083S	Primary	2018	28,754
271	Longford	SCOIL NAOMH MICHEAL	00856M	Primary	2019	46,022
272	Louth	ARDEE EDUCATE TOGETHER	20171P	Primary	2003	946,910
273	Louth	MARYMOUNT NS	19215C	Primary	2005	707,099
274	Louth	Scoil Náisiúnta Naomh Feichín	16208N	Primary	2006	284,869
275	Louth	SCOIL UI MHUIRE, DUNLEER	71780G	Post Primary School	2012	407,479
276	Louth	ST ITA'S SPECIAL SCHOOL	18936K	Special School	2015	558,592
277	Louth	BUSH POST PRIMARY CC, DUNDALK	71750U	Post Primary School	2015	327,515
278	Louth	S N COLUMCILLE	01434O	Primary	2017	75,522
279	Louth	ST JOSEPHS NS	19673J	Primary	2017	1,070,560
280	Louth	ST NICHOLAS NS	18347O	Primary	2018	131,492
281	Louth	ST BRIGID'S & ST PATRICK'S NS	20508B	Primary	2018	85,382
282	Louth	ST FRANCIS NS	20259G	Primary	2019	96,412
283	Louth	ST VINCENTS SECONDARY SCHOOL	63900R	Post Primary School	2019	33,210
284	Mayo	CULLENS N S	07054L	Primary	2003	667,849
285	Mayo	ST BRIDS SPECIAL NS	19375B	Special School	2006	178,835
286	Mayo	SN GLEANN A CHAISIL	13222P	Primary	2015	59,655
287	Mayo	ST GERALDS COLLEGE, CASTLEBAR	64580H	Post Primary School	2016	46,562

288	Mayo	ST JOSEPHS SECONDARY SCHOOL CASTLEBAR	64590K	Post Primary School	2016	139,689
289	Mayo	SN TOIN NA GAOITHE	16113C	Primary	2017	34,538
290	Mayo	COLAISTE MHUIRE, TUAR MHIC EADAIGH	64691Q	Post Primary School	2018	58,671
291	Mayo	NEWTOWNWHITE Educate Together NS	09040K	Primary	2019	43,698
292	Mayo	BALLINROBE COMMUNITY SCHOOL	91462E	Post Primary School	2019	67,330
293	Mayo	KNOCK N S	16122D	Primary	2020	45,041
294	Meath	ST. PETER'S NS	20191V	Primary	2004	1,095,016
295	Meath	SN CROS BAN	17705J	Primary	2006	1,011,669
296	Meath	ST. MARYS SPECIAL SCHOOL	19560T	Special School	2006	636,762
297	Meath	NAVAN COMMUNITY NS	20352T	Primary	2012	987,227
298	Meath	RATHAOTH C C	76088T	Post Primary School	2013	869,647
299	Meath	ST PAULS NS	19671F	Primary	2014	217,870
300	Meath	O CAROLANS COLLEGE NOBBER	71980O	Post Primary School	2014	485,796
301	Meath	DUNBOYNE SENIOR NS	20033D	Primary	2016	85,399
302	Meath	SCOIL MHUIRE COM TRIM	64450R	Post Primary School	2016	407,698
303	Meath	NAVAN POST PRIMARY SCHOOL	76173K	Post Primary School	2016	1,173,666
304	Meath	S N NA TRIONOIDE NAOFA	18106P	Primary	2017	72,488
305	Meath	RATHBEGGAN NS	18448U	Primary	2017	21,107
306	Meath	S N NAOMH PADRAIG	18044T	Primary	2018	73,128
307	Meath	BOYNE COMMUNITY SCHOOL	91508C	Post Primary School	2018	81,079
308	Meath	SCOIL SEACHNALL	17930Q	Primary	2019	49,394
309	Meath	SCOIL NAOMH BARRA	19253K	Primary	2019	-
310	Meath	Stepping Stones Special School	20379Q	Special School	2019	-
311	Meath	DUNSHAUGHLIN NS	20521Q	Primary	2019	56,875
312	Meath	ASHBOURNE COMMUNITY NATIONAL SCHOOL	20546J	Primary	2019	150,390
313	Meath	LAYTOWN DROGHEDA SECONDARY SCHOOL	68348A	Post Primary School	2019	131,331
314	Meath	DUNSHAUGHLIN V S	71960I	Post Primary School	2019	119,722
315	Meath	Enfield Post Primary	76595N	Post Primary School	2020	-
316	Monaghan	SCOIL MHICHIL	16954C	Primary	2006	73,585
317	Monaghan	NAOMH MICHEAL	15142E	Primary	2007	39,741
318	Monaghan	Edenmore N.S.	20337A	Primary	2016	75,909
319	Monaghan	ST MCCARTANS COLLEGE	64810V	Post Primary School	2016	125,014
320	Monaghan	SCOIL NAOMH MHUIRE	18539A	Primary	2017	63,960
321	Monaghan	SCOIL CHROI RRO NAOFA	20120V	Primary	2018	66,420
322	Monaghan	NAOMH OLIVER PLUNKETT	19469K	Primary	2019	43,622
323	Offaly	ST FRANCIS BNS	18406E	Primary	2007	226,132
324	Offaly	ST JOSEPHS NS	18797W	Primary	2009	254,417
325	Offaly	ST MARYS SECONDARY SCHOOL, EDENDERRY	65582Q	Post Primary School	2009	182,564
326	Offaly	OAKLANDS COLLEGE, EDENDERRY	72540O	Post Primary School	2012	1,258,409
327	Offaly	CLARA V S	72530L	Post Primary School	2015	314,748
328	Offaly	CLONEYHURKE N S	15923J	Primary	2019	7,355
329	Roscommon	S N MICHIL NAOFA	05220P	Primary	2015	9,489

330	Roscommon	CLOVER HILL N S	13262E	Primary	2015	57,505
331	Roscommon	ROSCOMMON C C	72290R	Post Primary School	2015	511,291
332	Roscommon	CLOONFAD N S	15557K	Primary	2016	55,431
333	Roscommon	S N LIOS A CUILL M	13047A	Primary	2019	29,422
334	Sligo	GS CHNOC NA RI	20044I	Primary	2005	1,324,589
335	Sligo	SCOIL MHUIRE AGUS IOSAF	20122C	Primary	2016	176,603
336	Sligo	GRANGE C C	72330D	Post Primary School	2017	66,863
337	Sligo	COOLA V.S., SOOEY, VIA BOYLE	72310U	Post Primary School	2018	34,440
338	Sligo	CARRAROE N S	14636B	Primary	2019	46,005
339	Sligo	ST JOSEPHS SPECIAL SCH	19340F	Special School	2019	-
340	Sligo	Summerhill College	65170Q	Post Primary School	2019	35,980
341	Sligo	EASKEY C S	72320A	Post Primary School	2019	4,525
342	Sligo	ST CECILIAS SCHOOL	19206B	Special School	2020	8,487
343	Sligo	MERCY COLLEGE SLIGO	65181V	Post Primary School	2020	-
344	Tipperary	CAHIR BOYS NS	18716T	Primary	2000	440,209
345	Tipperary	POWERSTOWN NS	17779P	Primary	2003	501,078
346	Tipperary	GS CHARRAIG AN SIUIRE	20085W	Primary	2003	1,174,720
347	Tipperary	SCOIL NAOMH CUALAN	20451V	Primary	2006	77,269
348	Tipperary	ST JOHNS	01594N	Primary	2007	458,980
349	Tipperary	S N MHUIRE NA TROCAIRE	10120P	Primary	2007	227,671
350	Tipperary	CORMAIC SPECIAL SCHOOL	19230V	Special School	2007	1,039,613
351	Tipperary	OUR LADYS SECONDARY SCHOOL	65440T	Post Primary School	2014	62,779
352	Tipperary	GAELSCOIL CHLUAIN MEALA	20007C	Primary	2015	101,191
353	Tipperary	SCOIL NAISIUNTA CHUIRT DOIGHTE	17783G	Primary	2017	100,517
354	Tipperary	LISSENHALL NS	18465U	Primary	2017	53,601
355	Tipperary	ST AILBES PRIMARY SCHOOL	20467N	Primary	2017	16,454
356	Tipperary	SCOIL RUAIN	72430H	Post Primary School	2017	32,185
357	Tipperary	BIRDHILL N S	13991Q	Primary	2018	50,296
358	Tipperary	SN BAILE AN ATHA	18207V	Primary	2018	40,221
359	Tipperary	S N CILL RUADHAIN	18369B	Primary	2018	89,923
360	Tipperary	SCOIL MHUIRE	18538V	Primary	2018	44,203
361	Tipperary	ST JOHN THE BAPTIST BNS	20155R	Primary	2018	40,590
362	Tipperary	NEWPORT COLLEGE	72450N	Post Primary School	2019	103,831
363	Tipperary	ARD SCOIL NA MBRAITHRE	65320J	Post Primary School	2020	5,317
364	Waterford	LISMORE COMMUNITY SCHOOL	91509E	Post Primary School	2008	30,182
365	Waterford	WATERPARK COLLEGE	64940L	Post Primary School	2016	967,040
366	Waterford	SCOIL NAOMH GOBNAIT	18488J	Primary	2017	38,610
367	Waterford	SCOIL GHARBHAIN	19814B	Primary	2017	80,959
368	Waterford	CBS DUNGARVAN	64880T	Post Primary School	2018	18,296
369	Waterford	ST DECLANS KILMACTHOMAS	72230W	Post Primary School	2018	77,062
370	Waterford	GLENBEG N S	15318P	Primary	2019	54,487
371	Waterford	ST JOHNS SPECIAL SCHOOL	19282R	Special School	2019	40,934
372	Waterford	DUNGARVAN TECHNICAL INSTITUTE	72220T	Post Primary School	2020	20,211
373	Westmeath	CONVENT S S KILBEGGAN	63221U	Post Primary School	2014	208,248
374	Westmeath	ST JOSEPHS SECONDARY SCHOOL	63310T	Post Primary School	2018	131,006

375	Westmeath	CASTLEPOLLARD COMMUNITY COLLEGE	71420W	Post Primary School	2018	220,701
376	Westmeath	ARD NA GCRAITH NS	18764H	Primary	2019	70,736
377	Westmeath	MOATE COMMUNITY SCHOOL	91501L	Post Primary School	2019	13,475
378	Wexford	ST SENANS NATIONAL SCH	08221J	Primary	2001	1,486,097
379	Wexford	ST PATRICKS SCHOOL	19240B	Special School	2006	1,688,171
380	Wexford	NEW ROSS EDUCATE TOGETHER	20458M	Primary	2018	58,875
381	Wicklow	GLEBE NS	14398L	Primary	2004	388,012
382	Wicklow	ST CATHERINES SPECIAL SCHOOL	19522L	Special School	2004	1,043,692
383	Wicklow	CARNEW V S	70790E	Post Primary School	2007	593,948
384	Wicklow	GALESCOIL AN INBHIR MHOIR	20080M	Primary	2012	919,572
385	Wicklow	KILCOOLE PRIMARY SCHOOL	20346B	Primary	2012	492,712
386	Wicklow	GREYSTONES COMMUNITY NS	20473I	Primary	2015	401,167
387	Wicklow	ARKLOW CBS	61770U	Post Primary School	2017	74,643
388	Wicklow	BLESSINGTON COMMUNITY COLLEGE	70760S	Post Primary School	2017	257,594
389	Wicklow	ST KEVIN'S COMMUNITY COLLEGE, DUNLAVIN	70800E	Post Primary School	2017	72,159
390	Wicklow	AVONDALE COMMUNITY COLLEGE, RATHDRUM	70810H	Post Primary School	2017	87,412
391	Wicklow	COLAISTE CHRAOBH ABHANN, CREOWEN	76076M	Post Primary School	2017	147,452
392	Wicklow	GAELCHOLAISTE NA MARA	76106S	Post Primary School	2017	53,000
393	Wicklow	SCOIL NAOMH IOSAF	20039P	Primary	2018	38,228
394	Wicklow	MONEYSTOWN N S	13246G	Primary	2019	1,033
395	Wicklow	KILCOOLE NEWTOWNMOUNTKENNEDY NS	20524W	Primary	2019	93,677
396	Wicklow	WICKLOW SECONDARY SCHOOL	68345R	Post Primary School	2019	185,996

* Notes:

(i) Of the 396 schools listed, 12 schools are showing no spend to date as these schools have not submitted invoices to date but invoices are expected this year.