

IRELAND NORTHWEST

gateway
to growth

Joint Committee on the Implementation
of the Good Friday Agreement

Thursday 4th April 2019

John Kelpie
Chief Executive

Seamus Neely
Chief Executive



Derry City & Strabane
District Council
Comhairle
Chathair Dhúro &
Cheantar an tSrátha Báin
Derry Cille & Strabane
Distric Council



Comhairle Contae
Dhún na nGall
Donegal County Council

*In conjunction with & supported by
The Executive Office & The Irish Government*

Derry-Donegal North West City Region

- **Derry/Londonderry** – 4th largest city on the Island
- **Cross-Border City Region** - > 350,000 population
- **35% of population** <25 years (youngest in Europe)
- **40,000 3rd level students** – UU; NWRC; LYIT
- **2 major acute regional hospitals**
- **Sub-Regional Economic Driver** – both North and South

Derry-Donegal North West City Region



Challenges

- **Infrastructural Need**
- **Realising Economic Potential**
- **Connectivity and peripherality**
- **Only City Region in UK/Ireland on an International jurisdictional border**
- **Back-to-back planning/engagement of governments**
- **Brexit ...**

A New and Integrated Approach

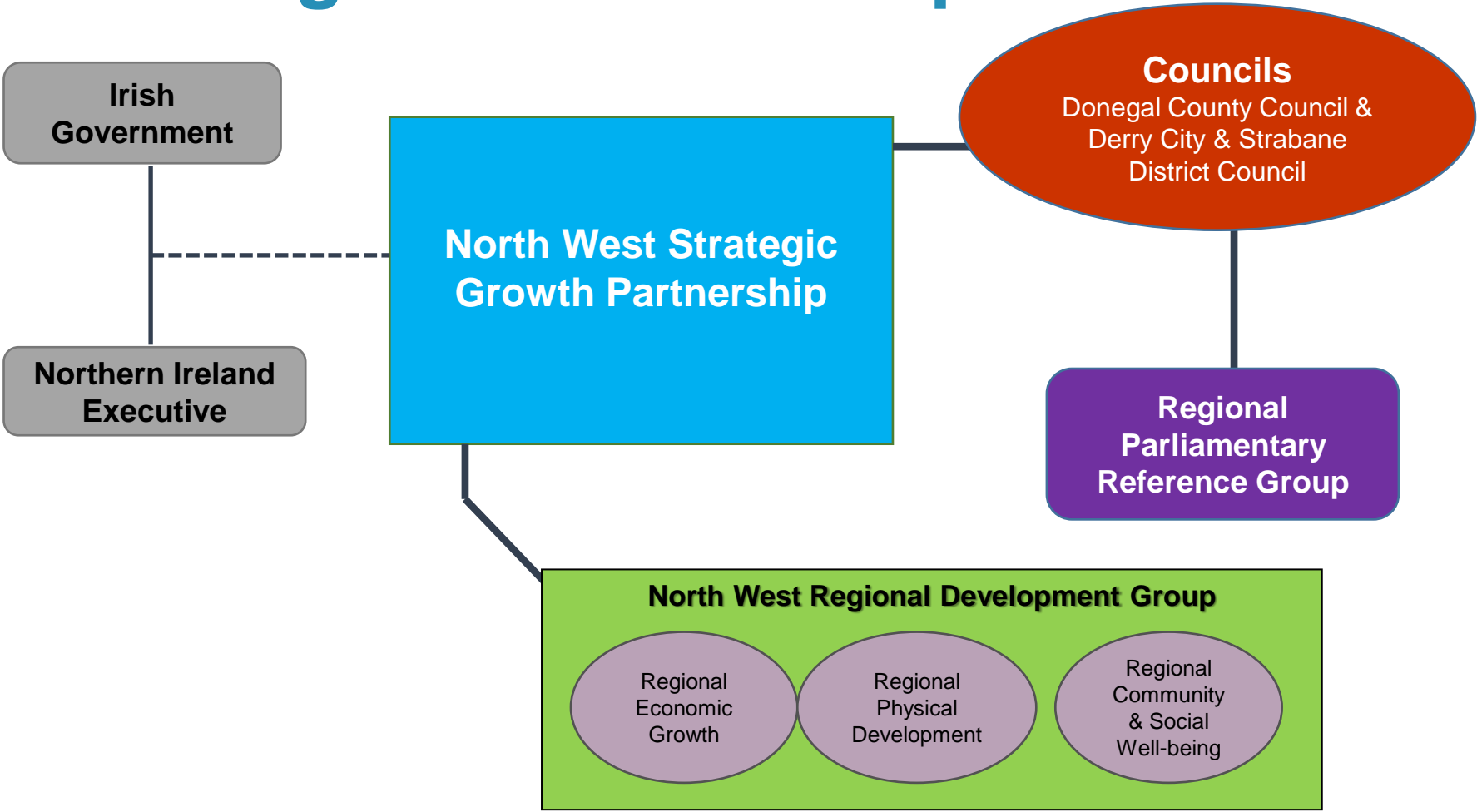
- **Council Level**
 - NI; Community Planning
 - ROI; Local, Economic & Community Planning (LECP)
- **North West** – New structures, governance and Partnership Agreements
- **National/Regional** – In collaboration with NI Executive & ROI Government
- **International** – Trade & diaspora links

New ways of working

- Clear, strategic, place-based leadership
- Shared objectives and partnership working
- Results and outcomes focused
- Collaborative, inclusive and integrated approach

***A thriving, sustainable,
prosperous City Region with
equality of opportunity for all.***

Agreed Partnership Model



NW Regional Level

- **A new and integrated approach**
 - **One Voice** for the North West City Region
 - **Agreed regional objectives:**
 - Economic growth and investment
 - Physical and environmental development
 - Social and community cohesion and wellbeing
- Realise the full and considerable potential of the North West City Region – the 4th largest on the Island - as a positive contributor to the economy, North and South.***

Education and Skills

- **Partnership between UU Magee, LYIT, NWRC & Donegal ETB**
- **Strategic Development MOU signed Feb 2018**
- **Joint resource established to drive collaborative growth and development**
- **International Partnership opportunities developed in conjunction with Councils, particularly US & China.**
- **Skills development/ training programmes/ skills academies' established in line with employee needs/ new FDI requirements .**

Economy and Business

- **Joint NW promotional & marketing investment material developed**
- **Regional economic model /dashboard under construction.**
- **In-market SME export assistance appointed in both Philadelphia and Boston Massachusetts**
- **Almost 50 companies to date on joint trade and investment missions to the US since 2016**
- **Collaborative approach to NW regional economic growth promoted with INI/ IDA /EI; IBEC/CBI; and locally with Chambers of Commerce and businesses.**
- **Ongoing Brexit analysis; collection of data/evidence of impact; liaison with other border Councils; communication with business; engagement with London, Dublin & Brussels**

Economy & Tourism/Arts

- **Dubai Duty Free Irish Open sponsorship in July 2018 utilised to showcase the entire NW Region.**
- **Feasibility study for deep-water cruise ship berthing facility in Lough Foyle financed in partnership with Foyle Port**
- **Joint NW Arts & Cultural Audience development strategy underway**
- **‘Great Hunger’ Exhibition visit in Feb 2019 supported and promoted.**
- **NW joint Tourism strategy to be developed**
- **NW Cross-border Youth Music proposal under consideration.**

Regional Spatial Planning

- **National Planning Framework joint response & submission in relation to Derry/ Letterkenny NW City Region.**
- **Includes North West City Region**
- **Letterkenny included as a Growth Centre**
- **Recognition of NW Strategic Growth Partnership**

Regional Spatial Planning

- **Collaborative approach at Council level to NW area planning & development.**
- **‘Atlas for a City Region’- joint engagement of Harvard Graduate School of Design (in partnership with UU, LYIT & NWRC) on analysis of post -Brexit Cross Border City Region underway 2018/19.**
- **ICLRD study on development of border villages and communities.**

Environment, Infrastructure & Regeneration

- **Joint promotion of key regional roads infrastructure; A5 / N2; A6; N13 / N14; A2 Economic corridor; TEN-T routes**
- **Multi Modal Transport Hub, Waterside on-site**
- **Strabane- Lifford Riverine Project at advanced funding determination stage.**
- **North West Greenways €18m, - 46km Muff/Derry; Buncrana/Derry; Lifford/Strabane.**
- **Regional Greenways Technical Feasibility Study underway**
- **Airports – information sharing and collaboration on operational & route development**
- **Development of Regional Energy Strategy & Climate Adaptation strategy**

Health, Wellbeing & Community Development

- **Liaison with & support of CAWT on cross – border health programmes & initiatives**
- **Support to Year of Youth 2019 campaign & events**
- **NW Sports Development programme to include:**
 - Coach Education & Training**
 - Club based coaching**
 - Grassroots partnership sports camps**
 - Celebration/ achievement recognition events.**
- **Platform for engagement with border communities**

Next steps ...

- **Development / Delivery / monitoring of approved projects & Initiatives.**
- **City Deal/ Regional Growth Deal.**
- **Economic Development/ Inward Investment Promotion.**
- **Potential future territorial co-operation funding**
- **Continued NW Partnership Funding**

IRELAND NORTHWEST

*gateway
to growth*

Thank you



Derry City & Strabane
District Council
Comhairle
Chathair Dhoire &
Cheantar an tSrátha Báin
Derry Citty & Strabane
Districk Council



Comhairle Contae
Dhún na nGall
Donegal County Council

In conjunction with & supported by
The Executive Office & The Irish Government